



You don't make progress by standing on the sidelines, whimpering and complaining. You make progress by implementing ideas.

SHIRLEY CHISHOLM

Celebrating Black women's rich tradition of feminist activism means reconceptualizing women's issues to include poverty, racism, imperialism, lynching, welfare reform, economic exploitation, decent housing, and a broad range of other concerns that generations of us have foregrounded.

BEVERLY GUY SHEFTALL

No person is your friend (or kin) who demands your silence, or denies your right to grow and be perceived as fully blossomed as you were intended.

ALICE WALKER

Once we understand the strength and resilience that we stand on and the legacy that we have a responsibility to further, we become emboldened to identify our passions, and unafraid to commit to them.

SHAM JARVIS O'NEAL

Intersectionality simply comes from the idea that if you're standing in the path of multiple forms of exclusion, you are likely to get hit by both.

KIMBERLY GRESHAM



Spelman College

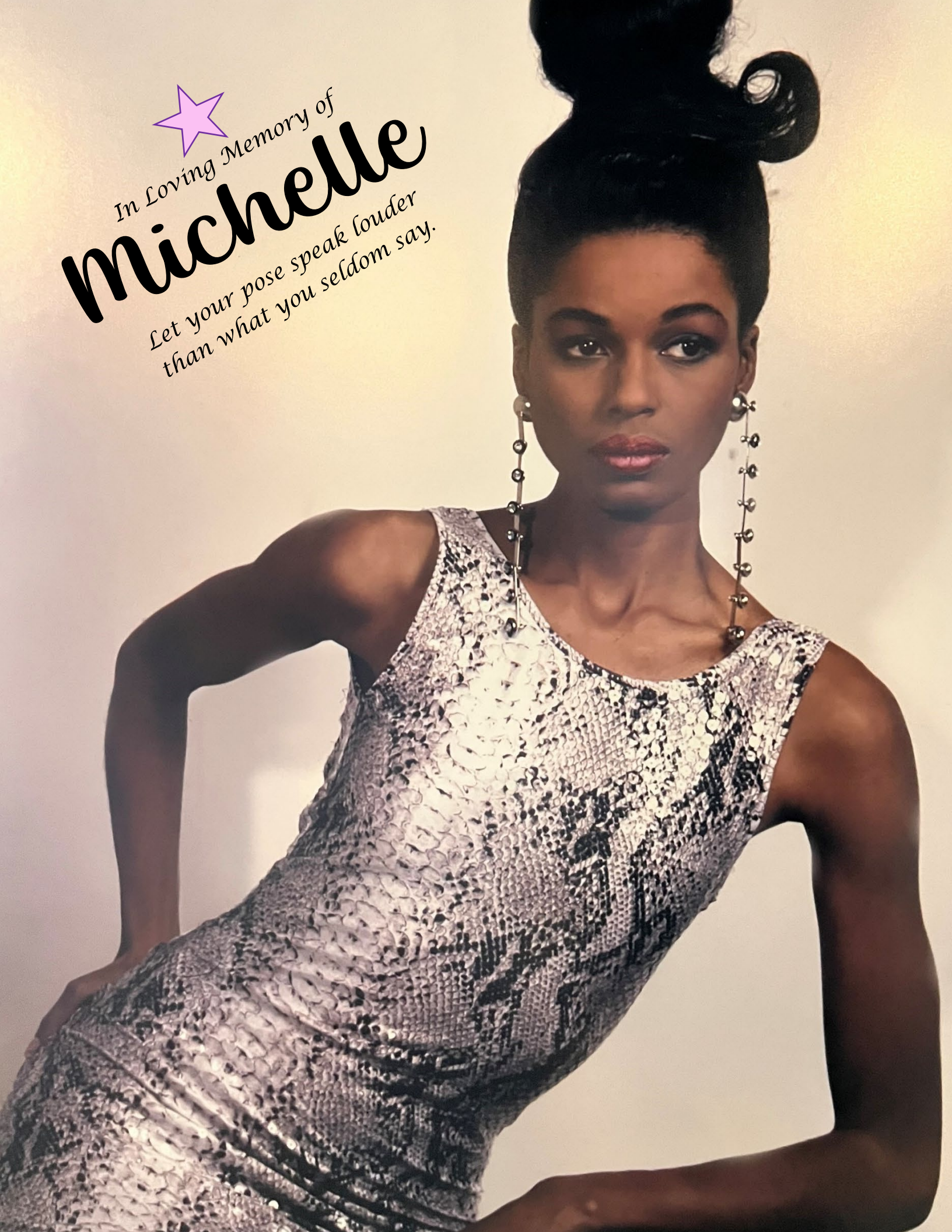
2022-2023 Fact Book



In Loving Memory of

Michelle

*Let your pose speak louder
than what you seldom say.*



Remembering our Colleague Michelle Blanch: Much More than Meets the Eye

In January 2023, Institutional Research (IR) and Spelman College lost a dedicated colleague and friend – Michelle Blanch. She began her career at Spelman College in the First in the World Grant Program and later, transferred to the IR team where she served as Project Specialist helping the department with administrative duties and collecting data. She was a very kind person who performed her job with the utmost thought and efficiency.

For those who knew her, Michelle was very well spoken, well read, and enjoyed the occasional streaming series on Netflix or Prime Video. We will always remember Monday mornings after a long weekend when Michelle would greet us and ‘spill all the tea’ on the latest plot twists from some of her favorite shows like *Better Call Saul*, *The Masked Singer*, *Flack*, or *The Flight*. She would explain in enthusiastic detail about ‘who did what’ or ‘who got caught’ or ‘what went down’; and declared that we should start watching as soon as possible. Michelle was a delight to talk with and the way she told a story could instantly transport you to another place. We really miss those early morning coffee talks.

So, when news came that Michelle had passed, we were all left in a state of disbelief, especially after she had attended a team meeting just two weeks prior and ordered a new laptop for her expected return. At her memorial service in late January, the room also told a story of a remarkably talented person. The walls were adorned with glamorous pictures and magazines covers of none other than *Michelle Renee Thompson Blanch*, a sought-after model in Paris, France! The first thought was ‘Who is this person?!’ – Michelle Blanch – because we knew nothing about this part of her life before Spelman. The memorial program filled in a lot of blanks...

“...She began modeling part-time for local department stores, the Atlanta Apparel Mart and frequently booked work that landed her on billboards, in magazines and on runways. Michelle always was a desired model for the Atlanta annual “Fashionata” charity event.

In the 1970’s she met a young black designer from Vicksburg, Mississippi by the name of Patrick Kelly who took Atlanta, and later Paris, by storm. Michelle quickly became one of his favorite models. Her distinctive runway walk always made her a standout and crowd favorite.

Patrick Kelly’s career took him to Paris, where he eventually reached the apex of his career, becoming the first American inducted into the Chambre Syndicale de la Couture, part of the regulating commission that determines high fashion: la Fédération de la Haute Couture et de la Mode. This allowed him to show his fashions on the same runways as designers such as Azzedine Alaia and Yves Saint Laurent.

After Yves Saint Laurent saw a photo of Michelle he said, “I want to see her in Paris.” That became the impetus that took her to France.

Paris was a good fit for Michelle. She continued to model, now on the runways of Paris, including Patrick Kelly’s Mona Lisa inspired show at the Louvre. While working with Patrick at his atelier she also discovered her love of the arts and studied faux painting techniques of the old masters.”

During our talks, Michelle never mentioned the fact that she was a model on the runways of Paris or her print work in fashion magazines! Perhaps, she didn’t want to be bombarded with questions or just wanted to look ahead, leaving past pursuits behind. As you can imagine, this left us quite amazed, yet it was completely plausible given her beauty and undaunted personality. So, today we remember our dear colleague and friend, Michelle Renee Thompson Blanch, and the time we spent together at Spelman fulfilling the goals of Institutional Research, sharing stories about our interests, and learning that sometimes there’s much more than meets the eye.

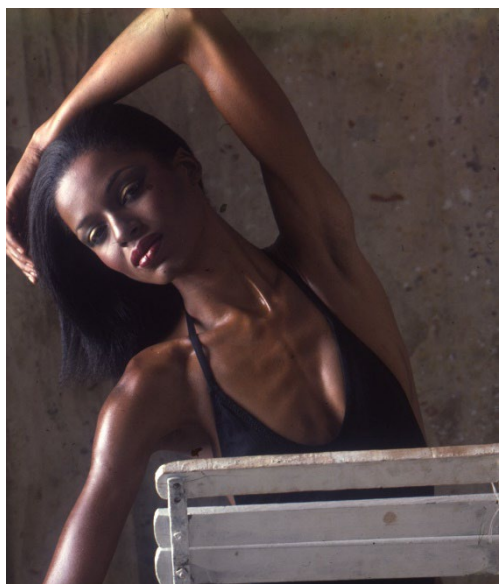




*The question isn't who is going to let me;
it's who is going to stop me!*



Figure 2 Collage of Michelle Blanch



Spelman College



Remembering Our Colleague	2-5
Spelman College	6
About	9
Meet the President.....	10
Board of Trustees	11
Profile	12
Special Programs	13
Spelman College Rankings.....	14
Student Summary Statistics.....	16
Faculty Summary Statistics	17
ADMISSIONS	18
<u>Full-Time, First-Time</u>	
Admission Trend.....	19
Transfer Students	19
By Ethnicity.....	20
By Age Distribution.....	20
By Majors.....	21
➤ <i>Top Ten Majors</i>	21
Major Trend.....	22
State or Territory & Georgia Counties.....	23
Grade Point Average (GPA) & Test Scores (SAT and ACT)	25
GPA Trend	26
SAT & ACT Trend	26
ENROLLMENT.....	27
<u>Total Enrollment</u>	
By Ethnicity.....	28
By Classification.....	28
By Major	29
➤ <i>Top Ten Majors</i>	29
Major & Classification.....	30
Major Trend.....	31
State or Territory & Georgia Counties.....	32
State or Territory Trend.....	33
International Students.....	34
First Generation Trend	35
First Gen. by Major.....	35



STEM Majors & Classification 36

ACADEMICS 37

Majors, Minors, Program & Additional Offerings 38

Faculty Data..... 39

- **Employment Status** 39
- **Rank & Gender** 39
- **Highest Degree** 39

GRADUATION & RETENTION 40

Major Trend..... 41

STEM Graduates 42

First-Time, Full-Time (FTFT) 43

- **Retention Rates** 43
- **Graduation Rates**..... 43

Graduate Employment Data..... 44

- **Firms that Hire**..... 44

FINANCIAL DATA 45

FTFT Grant & Loan Awards..... 46

Operating Budget 47

Education & General Expenditures..... 48

ALUMNAE PARTICIPATION & STUDENT LIFE 49

Alumnae Giving 50

Alumnae by State or Territory 51

Student Life: Student Profile..... 52

- **Commuters** 52
- **Live on campus** 52

Campus Events 53

FACILITIES & RESIDENTIAL LIFE..... 54

Student Occupancy 55

Campus..... 56

Social Media 57

Institutional Research & Contacts..... 58



ABOUT | Spelman College, founded in 1881 as the Atlanta Baptist Female Seminary, is a global leader in the education of women of African descent. Spelman College is accredited by the Southern Association of Colleges and Schools Commission on Colleges (SACSCOC). Spelman College empowers women to engage the many cultures of the world and inspires a commitment to positive social change through service. We are dedicated to academic excellence in the liberal arts and sciences and the intellectual, creative, ethical and leadership development of our students. Spelman College is located in the historic West End community, one of the National Register of Historic Places.” Spelman is a proud member of the Atlanta University Center Consortium (AUCC). The AUCC operates to advance the mission and strategic goals of Spelman College, Clark Atlanta University, Morehouse College, and Morehouse School of Medicine by providing a structure that allows students to cross-register at the other institutions to attain a broader collegiate experience.

MISSION STATEMENT | Spelman College, a historically Black college and a global leader in the education of women of African descent, is dedicated to academic excellence in the liberal arts and sciences and the intellectual, creative, ethical, and leadership development of its students. Through diverse learning modalities, Spelman empowers the whole person to engage the many cultures of the world and inspires a commitment to positive social change.





Helene D. Gayle, M.D., MPH, began serving as the 11th president of Spelman College on July 1, 2022. Dr. Gayle previously served as president and CEO of The Chicago Community Trust, one of the nation's oldest and largest community foundations, from October 2017 to June 2022. Under her leadership, the Trust adopted a new strategic focus on closing the racial and ethnic wealth gap in the Chicago region.

For almost a decade, Dr. Gayle was president and CEO of CARE, a leading international humanitarian organization. A pediatrician and public health physician with expertise in economic development, humanitarian, and health issues, she spent 20 years with the Centers for Disease Control, working primarily on HIV/AIDS. She led the Bill & Melinda Gates Foundation's programs on HIV/AIDS and other global health issues.

Dr. Gayle serves on public company and nonprofit boards, including The Coca-Cola Company, Organon, Palo Alto Networks, The Bill and Melinda Gates Foundation, Brookings Institution, Center for Strategic and International Studies, New America and the ONE Campaign. She is a member of the American Academy of Arts and Sciences, National Academy of Medicine, Council on Foreign Relations, American Public Health Association, National Medical Association, and American Academy of Pediatrics.

She was awarded the Chicago Mayor's Medal of Honor for her work on COVID relief and recovery for the city. Named one of *Forbes'* "100 Most Powerful Women" and one of *NonProfit Times'* "Power and Influence Top 50," she has authored numerous articles on global and domestic public health issues, poverty alleviation, gender equality, and wealth inequity.

Dr. Gayle is from Buffalo, N.Y. She earned a B.A. in psychology at Barnard College, an M.D. at the University of Pennsylvania, and an M.P.H. at Johns Hopkins University. She is a tenured Full Professor in the [Department of Environmental and Health Sciences](#) at Spelman College and has received 18 honorary degrees. She also holds faculty appointments at the University of Washington and Emory University.

Dr. Gayle is married to Stephen Keith, M.D., the First Gentleman of Spelman College and a proud Spelman dad.



Spelman College Board of Trustees

The board provides strategic leadership to the College by employing its members' expertise in everything from finance and international affairs to philanthropy and science.

Shenika R. Swan, J.D., MBA Board Operations Director

Officers of the Board

[Lovette Twyman Russell, C'83](#), **Chair**, Senior Consultant, Coxe Curry & Associates

[Rhonda E. Stryker](#) **Vice Chair**, Board of Directors, Stryker Corporation

[Colleen J. Taylor, C'90](#) **Vice Chair**, President, American Express U.S. Merchant Services

[Gwendolyn Adams Norton](#), **Secretary**, Artist, Philanthropist, Former Finance Professional

Board of Trustees

[Claire "Yum" Arnold](#) Co-Founder & CEO, Leapfrog Services

[Theodore R. Aronson](#) Founder and Managing Principal, AJO

[Frank Baker](#) Co-founder and Managing Partner, Siris Capital Group, LLC

[Kamau Bobb, Ph.D.](#) Founding Senior Director of the Constellations Center for Equity in Computing at the Georgia Tech

[Karen Brakke, Ph.D.](#) Faculty Trustee

[Janine Brown](#) Partner-in-Charge, Alston & Bird LLP

[Bonnie Carter, C'89](#) Child Advocate, Community Volunteer, Angel Investor

[Susan Dunn](#) Retired elementary school teacher, volunteer and philanthropic supporter

[Sherina Maye Edwards, C'2005](#) **Alumna Trustee**, Former Chief Strategy Officer, Mas Tech

[Kaye Foster](#) Senior Adviser, The Boston Consulting Group

[Helene Gayle](#) President, Spelman College

[Carmen D. Harris, C'2002](#) Co-Founder and Managing Partner, Magnus on Water

[Cara J. Hughes, C'2003](#) Vice President, Customer and Community, Baldwin Richardson Foods

[Cynthia E. Jackson, C'81](#) President/CEO, Workforce Loyalty, LLC

[Allegra Lawrence-Hardy, C'93](#) Co-founder and Partner, Lawrence & Bundy LLC

[Cheryl Mayberry McKissack](#) Founder, CEO and President Fashion Fair / Black Opal

[Helen Smith Price, C'79](#) Vice President, Global Community Affairs and President, The Coca-Cola Company Foundation

[Dr. Loren K. Robinson, C'2003](#) Chief Medical Officer and Vice President of Medical Affairs, CHRISTUS Health

[Lawrence M. Schall, J.D., Ed.D](#) President of the New England Commission of Higher Education

[Suzanne F. Shank](#) President, CEO, Founder and Owner, Siebert Williams Shank & Co, LLC

[Zoe Shepard, C'2026](#) Student Trustee

[Kathy N. Waller](#) Executive Vice President, Chief Financial Officer and President, Enabling Services (Retired), The Coca-Cola Company

[Pauletta Pearson Washington](#) American Actress

Representatives

[Lisa Hibbard, Ph.D.](#) Faculty Representative

[Keva Wright Berry, C'79](#) Alumna Representative

Chair Emerita

Rosalind G. Brewer, C'84 **Chair Emerita**

Life Trustees

Peggy Dulany, Ed.D.

Marian Wright Edelman, Esq., C'60

Russell Edgerton, Ph.D.

June Gary Hopps, Ph.D., C'60

Yvonne Jackson, C'70

Elizabeth McCormack, Ph.D.

G.G. Michelson

Vicki Palmer



Profile

President	Helene D. Gayle, M.D., MPH
Founded	April 11, 1881
Control	Private not-for-profit
Affiliation	Independent
Carnegie Classification	Baccalaureate Colleges: Arts & Sciences Focus
Campus	39 Acres, 26 Buildings
Calendar System	Semester
Awards Level	Bachelor's degree
Address	350 Spelman Lane, SW Atlanta, Georgia 30314-4399
Website Address	www.spelman.edu
Accrediting Agency	Southern Association of Colleges and Schools, Commission on Colleges (SACSCOC), 1866 Southern Lane, Decatur, GA 30033, 404-679-4500
Moody Rating	A1
Memberships	Associated Colleges of the South (ACS), Coalition of Women's Colleges, National Association for College Admissions Counseling, National Association of Schools of Music (NASM), National Council for the Accreditation of Teacher Education (NCATE), Georgia Professional Standards Commission (GaPSC), and Georgia Independent College Association (GICA)
Colors	Columbia Blue and White
Student Publications	The Blue Print: A Spelman Spotlight Publication (newspaper), Reflections (yearbook)
Graduation Requirements	Minimal 120 credit hours, minimal 2.00 G.P.A. (with a minimum grade of "C" in all major and/or minor requirements)
Financial Aid	Federal and State Need-Based Financial Aid Programs: Georgia Tuition Equalization Grant, Federal Direct Stafford Loan, Federal Direct Plus Loan, Federal Direct Unsubsidized Stafford Loan, Federal Pell Grant, Federal Perkins Loan, Federal Supplemental Educational Opportunity Grant, and Georgia Student Access Loan
Scholarships	Scholarships: Academic, Bonner, Dean's, Presidential, DeWitt Wallace for International Students, DeWitt Wallace Service, Georgia Hope, Student of Distinction, and other Spelman Funded Scholarships



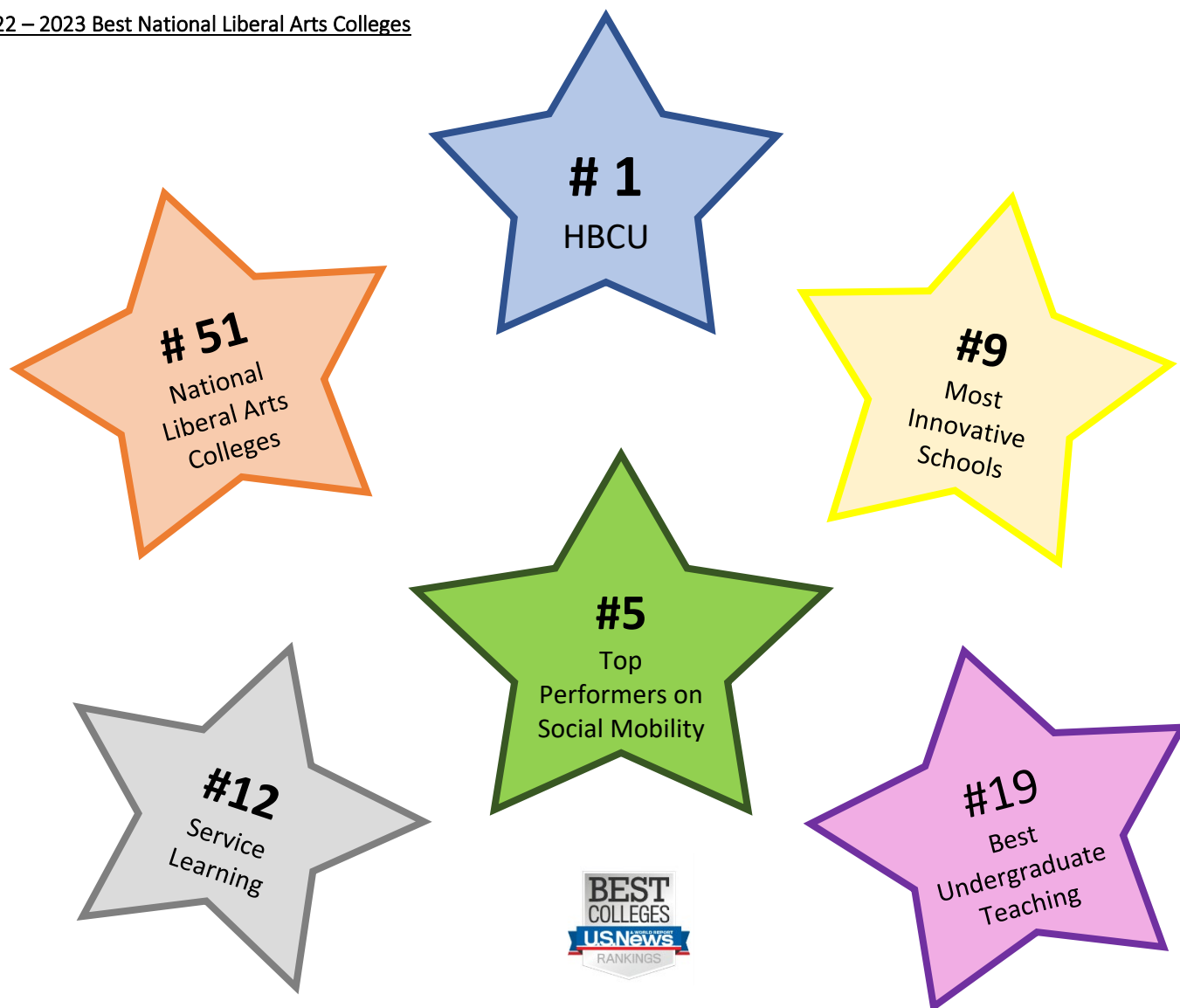
Special Programs and Other Resources

Honor Societies	Alpha Epsilon Delta, Alpha Lambda Delta, Alpha Sigma Lambda, Beta Kappa Chi, Golden, Key International Honor Society, Kappa Delta Epsilon, Phi Beta Kappa Honor Society, Pi Sigma Alpha Political Science Honor Society, Psi Chi National Honor Society in Psychology, Sigma Tau Delta International English Honor Society, Upsilon Pi Epsilon Honor Society for the Computing Sciences, Phi Alpha Theta National History Honor Society, Iota Iota Iota National Women’s Studies Honor Society, Alpha Kappa Delta, Alpha Sigma, Omicron Delta Epsilon, Phi Beta Delta, Phi Sigma Tau, Pi Kappa Lambda, Pi Mu Epsilon, Sigma Delta Pi, Sigma Pi Sigma, and Theta Alpha Kappa
Special Programs	ADAMHA-MARC Honors (AUC), Continuing Education, Domestic Exchange, Dual Degree in Engineering, Dual Degree in Nursing with Emory University, Early Acceptance Program with Georgia Regents University College of Nursing, Ethel Waddell Githii Honors, Freshman Studies Program, HBX CORE with Harvard University Business School, International Affairs Center, Neurobiology BS/ Neuroscience MS with Morehouse School of Medicine, Pre-freshmen Summer Science, ROTC, Study Abroad, Summer Science and Engineering, UMARC Honors (AUC), partnership agreements with various medical and nursing schools, including Boston University School of Medicine, University of Connecticut School of Dentistry, Rochester School of Nursing, and Howard University School of Medicine and Dentistry
Support Services & Programs	Assessment of Student Learning, Bonner Scholars Program, Career Planning and Development, Center for Academic Planning and Success, Community Service, Comprehensive Writing, Computing and Information Technology, Counseling Services, Disability Services, Foreign Languages Tutorial Services, Freshman Success, Graduate School Relations, Health Careers, Health Services, Mathematics Tutorial Services, Public Safety, Science, Engineering, & Technical Careers, Science Tutorial Services, Spelman College Museum of Fine Arts, Student Affairs, Student Financial Services, Student Success Center, Women’s Research and Resource Center, and Fall 2020 Virtual Global Internship
Activities & Organizations	Spelman Student Government Association, The P.U.L.S.E Programming Board, Miss Spelman Advisory, The African Sisterhood (AST), Greek Letter Organizations: Alpha Kappa Alpha, Delta Sigma Theta, Zeta Phi Beta, and Sigma Gamma Rho. Over 85 chartered academic, social, and professional clubs and religious organizations including...” then list the clubs/groups/organizations.



Spelman College Rankings and Themes

2022 – 2023 Best National Liberal Arts Colleges



IMAGINE | INVENT | ASCEND

Theme One	Theme Two	Theme Three	Theme Four
DELIVER THE SPELMAN PROMISE	ELEVATE THE SPELMAN DIFFERENCE	ENHANCE OPERATIONAL EXCELLENCE	PROMOTE ACADEMIC INNOVATION
<p>Ensure every Spelmanite graduates with a competitive edge.</p> <p>Prepare students for life and career through curricular and co-curricular activities.</p> <p>Streamline student processes.</p> <p>Create robust high school-to-college talent pipeline.</p>	<p>Publicize expertise in science of learning to provide reputational gains.</p> <p>Leverage expertise to promote institutional investment.</p> <p>Anchor the Spelman narrative in educational excellence and teaching and learning expertise.</p> <p>Establish requirements for and expand number of strategic partnerships.</p>	<p>Inspire an efficient, collaborative and results-oriented culture among faculty and staff.</p> <p>Invest in people and infrastructure.</p> <p>Transform the technology environment.</p> <p>Cultivate faculty and staff development and retention.</p>	<p>Support scholarly and creative excellence</p> <p>Invest in art and technology integration.</p> <p>Expand signature academic programs.</p> <p>Integrate living, learning, community engagement and leadership opportunities</p>

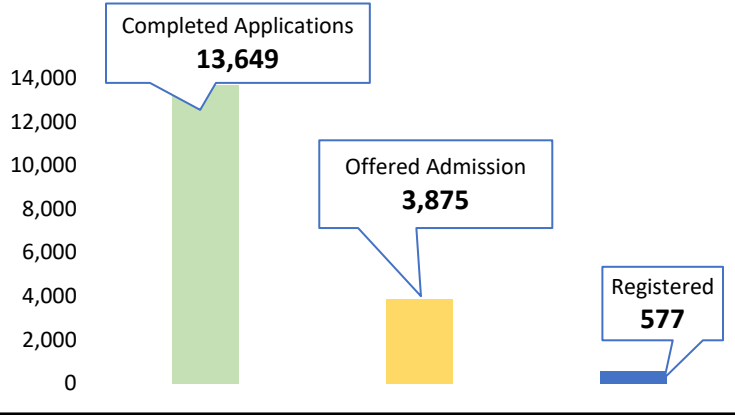




Student Summary Statistics

ADMISSIONS

Full-Time, First-Time (FTFT)



FTFT Test Scores

Average SAT Scores	
SAT R	Scores
EBRW	616
Math	578
Total	1,193

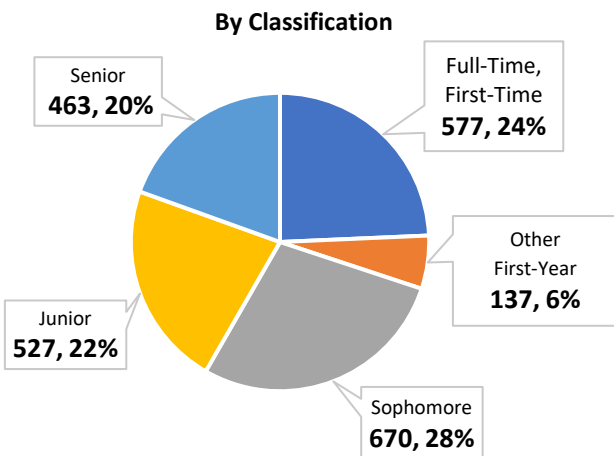
Average ACT Scores	
ACT	Scores
English	25
Math	22
Composite:	25

Fall Cohort (Full-Time, First-Time) **577**
 Yield Admitted **28%**
 Yield Registered (of those Admitted) **15%**

Transfers: 218 applicants 47 admitted 19 registered
 22% Yield Admitted 40% Yield Registered (of those Admitted)

STUDENT POPULATION

Total Enrollment

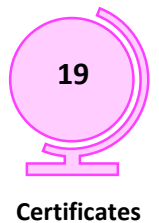


Ethnicity

Black or African American	2,314	97.47%
American Indian or Alaska Native	17	0.72%
Asian	15	0.63%
U.S. Nonresident	14	0.59%
White	11	0.46%
Native Hawaiian or Other Pacific Islander	3	0.13%
Total	2,374	
Full-Time	2,326	48 Part-Time

RESIDENCY		
Georgia	634	26.71%
Other States & Territories	1,726	72.70%
Foreign Countries	14	0.59%

Graduates



Student-to-Faculty Ratio



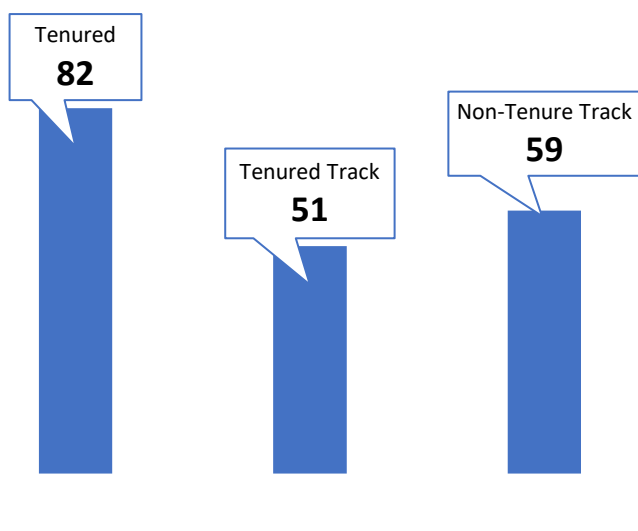
10:1

Tuition \$25,880
 Room & Board \$15,666
 Fees \$3,005

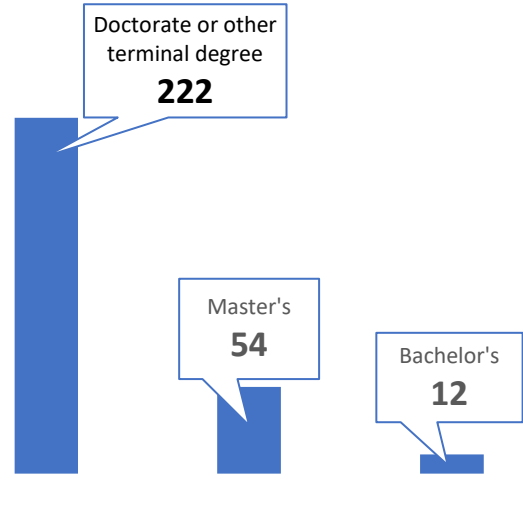
Faculty Summary Statistics

FACULTY DATA

Full-Time Faculty by Tenure Status



Faculty by Highest Degree Completed

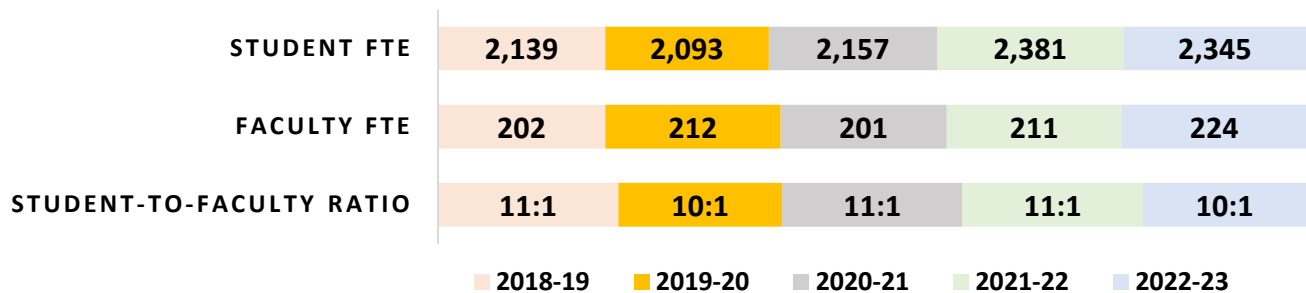


FACULTY BY RANK AND GENDER

Rank	Female		Male	
	Full-time	Part-time	Full-time	Part-time
Professor	21	1	8	0
Associate Professor	44	0	14	0
Assistant Professor	37	0	12	0
Instructor	17	40	1	14
Lecturer	25	30	13	11
TOTAL	215		73	
OVERALL TOTAL	288			

FACULTY BY ETHNICITY AND GENDER

Ethnicity	Women	Men
African American/Black	158	35
White	26	20
Asian	13	6
Hispanic/Latino	9	6
Two or more races	3	2
American Indian or Alaska Native	1	1
U.S. Nonresident	5	3



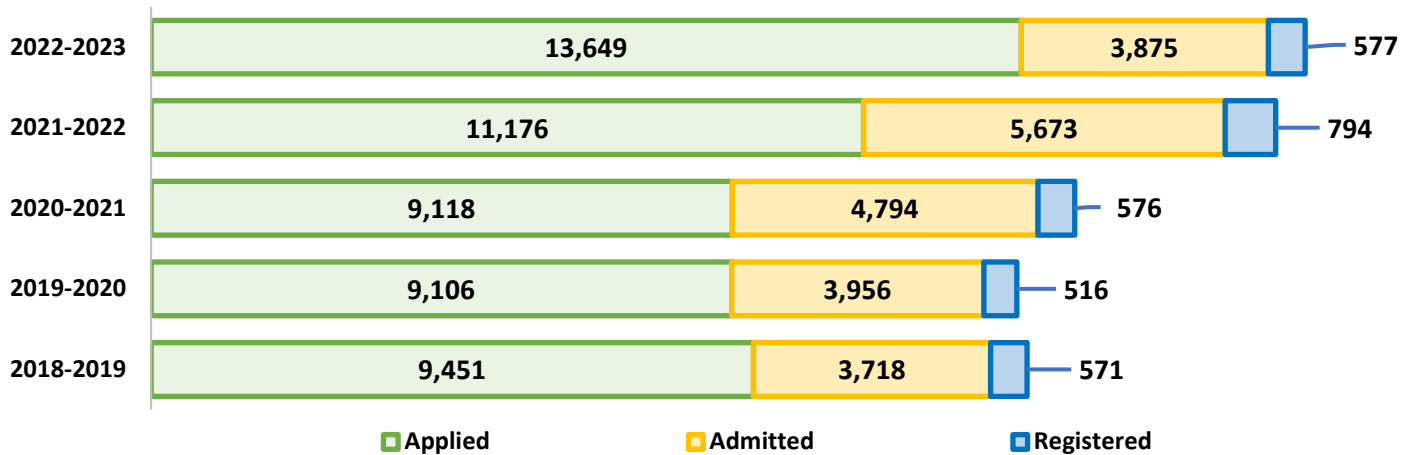
Admissions



Admissions

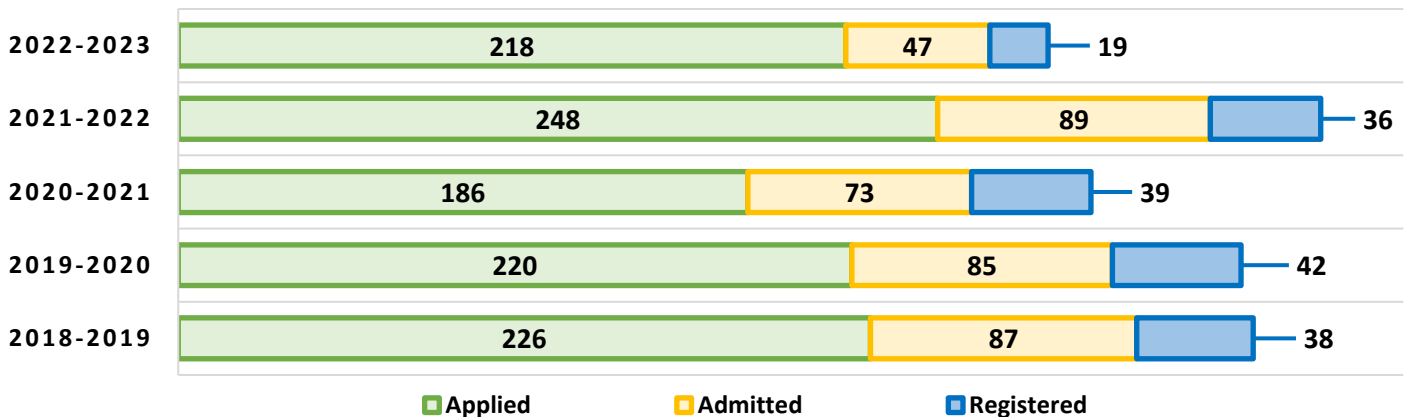
FULL-TIME, FIRST-TIME ADMISSION TREND

Academic Year	2018-2019	2019-2020	2020-2021	2021-2022	2022-2023
Applied	9,451	9,106	9,118	11,176	13,649
Admitted	3,718	3,956	4,794	5,673	3,875
Yield Admitted	39%	43%	53%	51%	28%
Registered	571	516	576	794	577
Yield Registered	15%	13%	12%	14%	15%



TRANSFER STUDENTS ADMISSION TREND

Academic Year	2018-2019	2019-2020	2020-2021	2021-2022	2022-2023
Applied	226	220	186	248	218
Admitted	87	85	73	89	47
Yield Admitted	38%	39%	39%	36%	22%
Registered	38	42	39	36	19
Yield Registered	44%	49%	53%	40%	40%



Admissions

FULL-TIME, FIRST-TIME BY ETHNICITY

Ethnicity	2018 - 2019	2019 - 2020	2020 - 2021	2021 - 2022	2022 - 2023
Black/African American	556	515	575	751	566
American Indian/Alaska Native	10	0	0	14	4
White	2	0	0	11	0
Asian	0	0	0	8	7
U.S. Nonresident	3	1	1	7	0
Native Hawaiian or Pacific Islander <i>(non-Hispanic)</i>	0	0	0	3	0
Hispanic/Latino	0	0	0	0	0
Total	571	516	576	794	577

FULL-TIME, FIRST-TIME AGE DISTRIBUTION

Age	2018 - 2019		2019 - 2020		2020 - 2021		2021 - 2022		2022 - 2023	
17 & Younger	39	6.8%	32	6.2%	80	13.9%	62	7.8%	43	7.5%
18	481	84.2%	447	86.6%	473	82.1%	669	84.3%	481	83.4%
19	50	8.8%	35	6.8%	22	3.8%	60	7.6%	50	8.7%
20 & Older	1	0.2%	2	0.4%	1	0.2%	3	0.4%	3	0.5%
Total	571		516		576		794		577	



Admissions

FULL-TIME, FIRST-TIME BY MAJOR

Major	Headcount	Percentage
Top 10 Majors		
Health Sciences	95	16%
Psychology	81	14%
Biology	73	13%
Political Science	70	12%
Economics	32	6%
English	25	4%
Undeclared	24	4%
International Studies	19	3%
Computer and Information Sciences	18	3%
Chemistry	15	3%
All other Majors		
Biochemistry	12	2%
Sociology	12	2%
Comparative Women's Studies	11	2%
Sociology & Anthropology	10	2%
Documentary Filmmaking	9	2%
Mathematics	8	1%
Art	7	1%
General Science (DDE)	7	1%
Theatre & Performance	7	1%
Elementary Education	6	1%
Environmental Science	6	1%
Dance Performance & Choreography	4	1%
Education Studies	4	1%
Environmental Studies	4	1%
History	4	1%
Art History	3	1%
Philosophy	3	1%
Photography	3	1%
Physics	3	1%
Music	1	0%
Spanish	1	0%
Total	577	



Admissions



FULL-TIME, FIRST-TIME BY MAJOR TREND

Major	Fall 2018		Fall 2019		Fall 2020		Fall 2021		Fall 2022	
Art	3	1%	5	1%	6	1%	13	2%	7	1%
Art History	0	0%	0	0%	1	0%	5	1%	3	1%
Biochemistry	17	3%	10	2%	19	3%	22	3%	12	2%
Biology	97	17%	81	16%	106	18%	137	17%	73	13%
Chemistry	14	2%	16	3%	9	2%	18	2%	15	3%
Comparative Women's Studies	5	1%	4	1%	3	1%	8	1%	11	2%
Computer and Information Sciences	21	4%	23	4%	14	2%	39	5%	18	3%
Dance Performance & Choreography	2	0%	0	0%	5	1%	7	1%	4	1%
Documentary Filmmaking	4	1%	6	1%	1	0%	11	1%	9	2%
Early Childhood Education	1	0%	8	2%	0	0%	0	0%	0	0%
Economics	15	3%	29	6%	23	4%	43	5%	32	6%
Education Studies	7	1%	2	0%	2	0%	8	1%	4	1%
Elementary Education	0	0%	0	0%	7	1%	6	1%	6	1%
English	23	4%	18	3%	19	3%	29	4%	25	4%
Environmental Sciences	0	0%	4	1%	0	0%	12	2%	6	1%
Environmental Studies	0	0%	0	0%	0	0%	2	0%	4	1%
French	1	0%	1	0%	2	0%	1	0%	0	0%
General Science (DDE)	22	4%	20	4%	13	2%	4	1%	7	1%
Health Sciences	66	12%	21	4%	45	8%	83	10%	95	16%
History	8	1%	2	0%	8	1%	4	1%	4	1%
Human Services	0	0%	0	0%	0	0%	1	0%	0	0%
International Studies	26	5%	28	5%	21	4%	19	2%	19	3%
Mathematics	6	1%	6	1%	9	2%	9	1%	8	1%
Music	5	1%	5	1%	6	1%	3	0%	1	0%
Philosophy	2	0%	1	0%	2	0%	4	1%	3	1%
Photography	0	0%	1	0%	0	0%	4	1%	3	1%
Physics	3	1%	3	1%	2	0%	8	1%	3	1%
Political Science	46	8%	48	9%	65	11%	88	11%	70	12%
Psychology	51	9%	55	11%	69	12%	135	17%	81	14%
Religious Studies	2	0%	0	0%	0	0%	0	0%	0	0%
Sociology	15	3%	12	2%	12	2%	20	3%	12	2%
Sociology & Anthropology	4	1%	5	1%	4	1%	8	1%	10	2%
Spanish	1	0%	4	1%	3	1%	2	0%	1	0%
Theatre & Performance	7	1%	11	2%	6	1%	16	2%	7	1%
Undeclared	97	17%	87	17%	94	16%	25	3%	24	4%
Grand Total	571	100%	516	100%	576	100%	794	100%	577	100%



Admissions

FULL-TIME, FIRST-TIME BY STATE OR TERRITORY & GEORGIA COUNTIES

State or Territory	Headcount
Georgia	131
Maryland	58
New York	45
Texas	40
Illinois	34
New Jersey	28
California	25
North Carolina	25
Virginia	24
Florida	21
District of Columbia	18
Tennessee	14
Pennsylvania	13
Ohio	12
Michigan	9
Missouri	9
Connecticut	7
Louisiana	7
Alabama	6
Colorado	6
Massachusetts	5
Minnesota	5
Mississippi	4
South Carolina	4
Arkansas	3
Delaware	3
Indiana	3
Kentucky	3
Washington	3
Oklahoma	2
Virgin Islands	2
Arizona	1
Iowa	1
Kansas	1
Military - Europe	1
Nevada	1
New Mexico	1
Oregon	1
Wisconsin	1
Grand Total	577

Georgia Counties	Headcount
Fulton	28
Cobb	22
Dekalb	22
Gwinnett	11
Henry	8
Clayton	6
Douglas	5
Fayette	4
Rockdale	4
Cherokee	2
Coweta	2
Richmond	2
Walton	2
Bibb	1
Brooks	1
Bryan	1
Butts	1
Carroll	1
Chatham	1
Columbia	1
Glynn	1
Jackson	1
Lee	1
Muscogee	1
Newton	1
Stephens	1
Grand Total	131



Admissions



FULL-TIME, FIRST-TIME ENROLLMENT BY STATE OR TERRITORY TREND

State or Region	2018-19	2019-20	2020-21	2021-22	2022-23
Alabama	10	8	11	11	6
Alaska	0	1	0	0	0
Arizona	1	5	0	2	1
Arkansas	3	2	4	2	3
California	30	28	47	51	25
Colorado	4	2	1	7	6
Connecticut	2	4	6	9	7
Delaware	2	2	6	6	3
District of Columbia	13	12	20	16	18
Florida	21	19	16	33	21
Georgia	131	129	145	189	131
Hawaii	0	1	0	0	0
Illinois	27	22	34	39	34
Indiana	3	2	0	6	3
Iowa	2	2	0	1	1
Kansas	1	2	1	1	1
Kentucky	3	2	4	2	3
Louisiana	17	11	4	14	7
Maine	0	0	0	0	0
Maryland	44	44	30	68	58
Massachusetts	9	7	13	4	5
Michigan	19	14	16	20	9
Minnesota	5	1	5	4	5
Mississippi	5	3	0	6	4
Missouri	8	2	4	7	9
Nebraska	1	0	0	0	0
Nevada	3	2	1	2	1
New Hampshire	0	0	1	0	0
New Jersey	25	18	27	33	28
New Mexico	0	0	0	1	1
New York	34	27	40	46	45
North Carolina	24	19	20	24	25
North Dakota	0	0	0	0	0
Ohio	18	13	14	18	12
Oklahoma	3	0	1	0	2
Oregon	0	3	4	0	1
Pennsylvania	18	15	21	28	13
Rhode Island	0	0	0	0	0
South Carolina	10	9	9	16	4
Tennessee	12	12	10	17	14
Texas	27	43	24	55	40
U. S. Virgin Islands	0	1	1	1	2
Utah	0	0	0	0	0
Vermont	0	0	0	0	0
Virginia	27	23	30	38	24
Washington	1	0	2	4	3
West Virginia	0	0	0	1	0
Wisconsin	4	5	2	4	1
Wyoming	0	0	0	0	0
Foreign Countries	3	1	1	7	0
Military - Europe	0	0	0	0	1
Military - Pacific	0	0	1	1	0
Unspecified	1	0	0	0	0
Total	571	516	576	794	577



Admissions

FULL-TIME, FIRST-TIME GRADE POINT AVERAGE (GPA) AND TEST SCORES (SAT & ACT)



3.89

Average GPA

GPA	2022-23	
3.50 or higher	521	91%
3.00 – 3.49	49	9%
2.50 – 2.99	2	0%
2.00 – 2.49	0	0%
Below 1.99	0	0%
Total	572	

1,193

Spelman
SAT Mean

25

Spelman
ACT Mean

Score Range	2022-23
1,400 – 1,600	12
1,300 – 1,399	30
1,200 – 1,299	48
1,100 – 1,199	46
1,000 – 1,099	28
900 – 999	9
800 – 899	3
700 – 799	0
Below 700	0
Total	176
Nationwide Mean	1,050
Spelman Mean	1,147
25 th Percentile	1,100
75 th Percentile	1,290

Score Range	2022-23
29 – 36	24
27 – 28	9
25 - 26	21
23 - 24	19
21 - 22	16
Below 21	17
Total	106
Nationwide Mean	20
Spelman Mean	25
25 th Percentile	22
75 th Percentile	27



Admissions

FULL-TIME, FIRST-TIME HIGH SCHOOL GRADE POINT AVERAGE (GPA)

GPA	2018-19		2019-20		2020-21		2021-22		2022-23	
3.50 or Higher	412	76%	421	83%	394	68%	684	87%	521	91%
3.00-3.49	128	23%	86	17%	178	31%	102	13%	49	9%
2.50-2.99	5	1%	1	0%	4	1%	3	0%	2	0%
2.00-2.49	0	0%	0	0%	0	0%	0	0%	0	0%
Below 1.99	0	0%	0	0%	0	0%	0	0%	0	0%
Total	545		508		576		789		572	
Average	3.73		3.76		3.65		3.75		3.89	

FULL-TIME, FIRST-TIME SCHOLASTIC APTITUDE TEST (SAT)

Total SAT	2018-19	2019-20	2020-21	2021-22	2022-23
1,400 - 1,600	11	12	9	7	12
1,300 - 1,399	30	30	26	11	30
1,200 - 1,299	82	91	66	48	48
1,100 - 1,199	169	137	133	48	46
1,000 - 1,099	100	101	151	32	28
900 - 999	10	8	24	13	9
800 - 899	0	0	0	9	3
700 - 799	0	0	0	1	0
Below 700	0	0	0	0	0
Total	402	379	409	169	176
Nationwide Mean	1,068	1,059	1,059	1,060	1,050
Spelman Mean	1,156	1,160	1,133	1,147	1,193
25th percentile	1,090	1,090	1,060	1,070	1,100
75th percentile	1,220	1,220	1,190	1,240	1,290

FULL-TIME, FIRST-TIME AMERICAN COLLEGE TESTING (ACT)

ACT Composite	2018-19	2019-20	2020-21	2021-22	2022-23
29-36	36	32	25	26	24
27-28	30	29	27	11	9
25-26	55	32	30	22	21
23-24	85	63	57	25	19
21-22	69	66	71	38	16
Below 21	42	31	75	43	17
Total	317	253	285	165	106
Nationwide Mean	21	21	21	20	21
Spelman Mean	24	24	23	23	25
25th Percentile	22	22	20	20	22
75th Percentile	26	26	25	26	27



Enrollment



Enrollment



TOTAL ENROLLMENT BY ETHNICITY

Ethnicity	2017-18	2018-19	2019-20	2020-21	2021-22	2022-23
Black/African American	2,071	2,107	2,065	2,173	2,349	2,314
American Indian/Alaska Native	33	40	30	18	23	17
Asian	0	1	1	1	10	15
U.S. Nonresident	18	17	16	11	17	14
White	2	3	3	2	15	11
Native Hawaiian or Pacific Islander (non-Hispanic)	0	0	0	0	3	3
Two or More Races	11	1	5	2	0	0
Hispanic/Latino	2	2	0	0	0	0
Total	2,137	2,171	2,120	2,207	2,417	2,374



TOTAL ENROLLMENT BY CLASSIFICATION

Classification	2018-19		2019-20		2020-21		2021-22		2022-23	
	Count	%	Count	%	Count	%	Count	%	Count	%
Full-Time, First-Time	571	26%	516	24%	576	26%	794	33%	577	24%
Other First-Year	94	4%	62	3%	56	3%	174	7%	137	6%
Sophomore	542	25%	553	26%	508	23%	459	19%	670	28%
Junior	502	23%	514	24%	529	24%	478	20%	527	22%
Senior	462	21%	475	22%	538	24%	512	21%	463	20%
Total	2,171		2,120		2,207		2,417		2,374	
FTE (IPEDS)	2,142		2,096		2,161		2,384		2,345	
Full-Time	2,123		2,080		2,132		2,363		2,326	
Part-Time	48		40		75		54		48	



Enrollment



TOTAL ENROLLMENT BY MAJOR

Major	Count	%
Top 10 Majors		
Psychology	381	16%
Health Sciences	300	13%
Political Science	282	12%
Biology	263	11%
Economics	167	7%
English	115	5%
Computer and Information Sciences	99	4%
International Studies	99	4%
Sociology	66	3%
Comparative Women's Studies	53	2%
All Other Majors		
Biochemistry	50	2%
Theatre & Performance	43	2%
Mathematics	41	2%
Chemistry	38	2%
Documentary Filmmaking	37	2%
Elementary Education	37	2%
Undeclared	36	2%
Sociology & Anthropology	35	1%
Art	29	1%
Environmental Science	25	1%
Dance Performance & Choreography	24	1%
Education Studies	24	1%
History	20	1%
General Science (DDE)	16	1%
Philosophy	14	1%
Physics	14	1%
Art History	13	1%
Spanish	13	1%
Environmental Studies	11	0%
Music	10	0%
Photography	8	0%
Human Services	3	0%
Independent Major-BA	3	0%
Religious Studies	3	0%
French	2	0%
Total	2,374	100%



Enrollment



TOTAL ENROLLMENT BY MAJOR & CLASSIFICATION

Majors	New First-Time			Other First Year	Sophomore	Junior	Senior	GRAND TOTAL
	First Year	+Classified Sophomore	+Classified Junior					
Art	7	0	0	2	9	6	5	29
Art History	3	0	0	2	3	3	2	13
Biochemistry	12	0	0	2	14	8	14	50
Biology	72	1	0	11	69	64	46	263
Chemistry	14	1	0	2	6	5	10	38
Comparative Women's Studies	9	1	1	4	15	12	11	53
Computer and Information Sciences	15	1	2	8	33	13	27	99
Dance Performance & Choreography	4	0	0	0	9	7	4	24
Documentary Filmmaking	9	0	0	4	8	10	6	37
Economics	31	1	0	11	60	27	37	167
Education Studies	4	0	0	1	7	8	4	24
Elementary Education	6	0	0	3	8	7	13	37
English	23	2	0	6	35	30	19	115
Environmental Science	5	0	1	0	8	3	8	25
Environmental Studies	4	0	0	1	3	2	1	11
French	0	0	0	0	2	0	0	2
General Science (DDE)	7	0	0	2	3	2	2	16
Health Sciences	84	9	2	14	91	48	52	300
History	4	0	0	1	5	7	3	20
Human Services	0	0	0	1	0	1	1	3
Independent Major-BA	0	0	0	0	0	1	2	3
International Studies	19	0	0	4	16	32	28	99
Mathematics	7	1	0	2	10	15	6	41
Music	1	0	0	0	1	4	4	10
Philosophy	3	0	0	0	5	4	2	14
Photography	3	0	0	1	2	1	1	8
Physics	3	0	0	2	5	3	1	14
Political Science	64	6	0	10	80	71	51	282
Psychology	77	4	0	25	116	94	65	381
Religious Studies	0	0	0	1	1	0	1	3
Sociology	12	0	0	6	16	13	19	66
Sociology & Anthropology	10	0	0	0	9	10	6	35
Spanish	1	0	0	0	3	5	4	13
Theatre & Performance	7	0	0	3	15	10	8	43
Undeclared	24	0	0	8	3	1	0	36
TOTAL	544	27	6	137	670	527	463	2,374



Enrollment



TOTAL ENROLLMENT BY MAJOR TREND

Major	2018-19		2019-20		2020-21		2021-22		2022-23	
Art	20	1%	15	1%	22	1%	30	1%	29	1%
Art History	0	0%	3	0%	7	0%	13	1%	13	1%
Biochemistry	42	2%	35	2%	44	2%	51	2%	50	2%
Biology	303	14%	292	14%	324	15%	359	15%	263	11%
Chemistry	36	2%	41	2%	44	2%	45	2%	38	2%
Comparative Women's Studies	61	3%	63	3%	52	2%	50	2%	53	2%
Computer and Information Sciences	73	3%	82	4%	84	4%	102	4%	99	4%
Dance Performance & Choreography	10	0%	13	1%	19	1%	23	1%	24	1%
Documentary Filmmaking	11	1%	25	1%	28	1%	36	1%	37	2%
Elementary Education	25	1%	33	2%	42	2%	33	1%	37	2%
Economics	146	7%	151	7%	143	6%	158	7%	167	7%
Education Studies	32	1%	25	1%	19	1%	19	1%	24	1%
English	144	7%	133	6%	117	5%	118	5%	115	5%
Environmental Science	8	0%	11	1%	9	0%	25	1%	25	1%
Environmental Studies	4	0%	5	0%	5	0%	5	0%	11	0%
French	1	0%	2	0%	3	0%	4	0%	2	0%
General Science (DDE)	32	1%	33	2%	23	1%	13	1%	16	1%
Health Sciences	216	10%	167	8%	189	9%	247	10%	300	13%
History	32	1%	20	1%	29	1%	24	1%	20	1%
Human Services	3	0%	3	0%	3	0%	6	0%	3	0%
Independent Major-BA	0	0%	3	0%	3	0%	0	0%	3	0%
International Studies	99	5%	102	5%	105	5%	103	4%	99	4%
Mathematics	69	3%	53	3%	52	2%	44	2%	41	2%
Music	20	1%	18	1%	19	1%	12	0%	10	0%
Philosophy	15	1%	15	1%	16	1%	13	1%	14	1%
Photography & Film	0	0%	2	0%	3	0%	7	0%	8	0%
Physics	16	1%	13	1%	8	0%	17	1%	14	1%
Political Science	206	9%	203	10%	223	10%	271	11%	282	12%
Psychology	266	12%	281	13%	303	14%	381	16%	381	16%
Religious Studies	6	0%	6	0%	3	0%	2	0%	3	0%
Sociology	73	3%	64	3%	71	3%	73	3%	66	3%
Sociology & Anthropology	17	1%	32	2%	28	1%	28	1%	35	1%
Spanish	15	1%	21	1%	20	1%	13	1%	13	1%
Theatre & Performance	38	2%	40	2%	29	1%	44	2%	43	2%
Undeclared	132	6%	115	5%	118	5%	48	2%	36	2%
Total	2,171	100%	2,120	100%	2,207	100%	2,417	100%	2,374	100%



Enrollment



TOTAL ENROLLMENT BY STATE OR TERRITORY & GEORGIA COUNTIES

State or Territory	Headcount
Georgia	634
Maryland	187
Texas	154
New York	147
California	134
Illinois	120
Virginia	104
New Jersey	101
Florida	86
North Carolina	86
Pennsylvania	72
Michigan	59
District of Columbia	58
Ohio	52
Tennessee	50
South Carolina	38
Alabama	34
Louisiana	33
Massachusetts	28
Missouri	22
Connecticut	20
Delaware	17
Colorado	15
Foreign	14
Mississippi	13
Minnesota	12
Indiana	11
Kentucky	10
Arkansas	9
Oregon	9
Washington	8
Wisconsin	7
Arizona	5
Kansas	4
Oklahoma	4
Virgin Islands	4
Nevada	3
Hawaii	2
Alaska	1
Iowa	1
Military - Europe	1
Military - Pacific	1
New Hampshire	1
New Mexico	1
Puerto Rico	1
West Virginia	1
TOTAL	2,374

Georgia County	Headcount
Fulton	174
Cobb	85
Dekalb	68
Gwinnett	63
Henry	35
Douglas	21
Clayton	20
Fayette	18
Rockdale	14
Newton	12
Chatham	9
Coweta	9
Walton	9
Muscogee	8
Paulding	7
Cherokee	6
Columbia	5
Richmond	5
Bartow	4
Bibb	4
Carroll	4
Bryan	3
Bulloch	3
Hall	3
Lowndes	3
Troup	3
Forsyth	2
Houston	2
Jackson	2
Jefferson	2
Lee	2
Liberty	2
Spalding	2
Stephens	2
Baldwin	1
Brooks	1
Butts	1
Clarke	1
Colquitt	1
Cook	1
Dawson	1
Dougherty	1
Elbert	1
Glynn	1
Irwin	1

Counties cont.	Headcount
Lamar	1
Macon	1
McDuffie	1
Meriwether	1
Monroe	1
Oconee	1
Peach	1
Screven	1
Tattnall	1
Telfair	1
Toombs	1
Wilkes	1
Grand Total	634



Enrollment



TOTAL ENROLLMENT BY STATE OR TERRITORY TREND

U.S. State or Territory	2018-19	2019-20	2020-21	2021-22	2022-23
Alabama	45	35	37	40	34
Alaska	0	1	1	1	1
Arizona	6	8	7	7	5
Arkansas	13	11	12	10	9
California	140	134	140	156	134
Colorado	13	9	7	11	15
Connecticut	13	16	18	22	20
Delaware	11	9	15	15	17
District of Columbia	47	48	54	53	58
Florida	79	76	67	85	86
Georgia	566	550	588	639	634
Hawaii	0	1	1	1	2
Illinois	97	101	109	120	120
Indiana	15	14	8	8	11
Iowa	5	6	5	2	1
Kansas	5	6	4	5	4
Kentucky	10	9	10	7	10
Louisiana	44	46	40	40	33
Maine	2	3	2	0	0
Maryland	144	149	151	182	187
Massachusetts	24	27	30	28	28
Michigan	62	61	67	68	59
Minnesota	14	11	11	15	12
Mississippi	20	16	12	13	13
Missouri	22	19	18	21	22
Nebraska	1	1	1	1	0
Nevada	10	8	11	7	3
New Hampshire	0	1	1	1	1
New Jersey	76	79	92	106	101
New Mexico	1	0	1	1	1
New York	128	123	136	142	147
North Carolina	107	92	91	84	86
North Dakota	0	0	0	0	0
Ohio	55	51	51	54	52
Oklahoma	13	9	6	3	4
Oregon	2	4	9	7	9
Pennsylvania	74	64	71	82	72
Puerto Rico	0	0	0	1	1
Rhode Island	1	0	0	0	0
South Carolina	35	39	42	40	38
Tennessee	49	44	39	46	50
Texas	99	117	115	143	154
U.S. Virgin Islands	1	2	1	3	4
Utah	0	0	0	0	0
Vermont	0	0	0	0	0
Virginia	85	81	93	107	104
Washington	9	8	7	8	8
West Virginia	0	0	0	1	1
Wisconsin	8	12	12	11	7
Wyoming	0	0	0	0	0
Foreign Countries	17	16	11	17	14
Military - Americas	2	1	0	0	0
Military - Europe	1	1	1	1	1
Military - Pacific	0	1	2	2	1
Unspecified	0	0	0	0	0
TOTAL	2,171	2,120	2,207	2,417	2,374



Enrollment



INTERNATIONAL STUDENT ENROLLMENT

Country	Headcount
Bahamas	2
Jamaica	2
United Kingdom	2
Bermuda	1
Brazil	1
Dominica	1
Guinea	1
Japan	1
Kenya	1
Taiwan	1
Trinidad & Tobago	1



Country	Major
Bahamas	Health Sciences
	Biochemistry
Bermuda	Theater Performance
Brazil	Undeclared
Dominica	Biology
Guinea	International Studies
Jamaica	Economics
	Physics
Japan	Undeclared
Kenya	Psychology
Taiwan	Undeclared
Trinidad & Tobago	Mathematics
United Kingdom	International Studies
	Political Science



Enrollment



FIRST GENERATION ENROLLMENT

	2018-19		2019-20		2020-21		2021-22		2022-23	
Total Enrollment	2,171		2,120		2,207		2,417		2,374	
First Generation Students	347	16%	314	15%	302	14%	291	12%	264	11%

Major	Headcount
Top 10 Majors	
Psychology	48
Biology	36
Political Science	36
Health Sciences	29
Economics	18
Computer and Information Sciences	12
Sociology	9
Sociology & Anthropology	7
Comparative Women's Studies	6
Undeclared	6
All Other Majors	
Art	5
International Studies	5
Art History	4
Biochemistry	4
Chemistry	4
English	4
Environmental Science	4
Theatre & Performance	4
Documentary Filmmaking	3
Education Studies	3
Elementary Education	3
Mathematics	3
Physics	3
General Science (DDE)	2
History	2
Dance Performance & Choreography	1
Environmental Studies	1
Human Services	1
Spanish	1
TOTAL	264

“ First Gens are AMAZING! We're literally breaking into new territory not only for ourselves but for our children and grandchildren. I love that I can talk about my experiences and one of my sisters can relate to what I am saying. I'm constantly empowered by Dr. Tarshia Stanley and thankful for all of her encouragement. ”

Spelman College First Generation Students share their stories...

<https://youtu.be/JHZ-K3Ha4t8>



Enrollment



STEM ENROLLMENT BY MAJOR AND CLASSIFICATION

Majors	Full-Time, First-Time	Other First-Year	Sophomore	Junior	Senior	Grand Total
Biochemistry	12	2	14	8	14	50
Biology	73	11	69	64	46	263
Chemistry	15	2	6	5	10	38
Computer and Information Sciences	18	8	33	13	27	99
Economics*	32	11	60	27	37	167
Environmental Science	6	0	8	3	8	25
General Sciences (DDE)	7	2	3	2	2	16
Health Sciences	95	14	91	48	52	300
Mathematics	8	2	10	15	6	41
Physics	3	2	5	3	1	14
Psychology*	81	25	116	94	65	381
Grand Total	350	79	415	282	268	1,394

*NEW MAJORS ADDED TO STEM 2022-23

Classification	2018-19	2019-20	2020-21	2021-22	2022-23
New First-Time	246	184	217	332	350
Other First-Year	31	14	14	59	79
Sophomore	198	195	172	159	415
Junior	173	164	177	164	282
Senior	147	171	197	189	268
Total	795	728	777	903	1,394



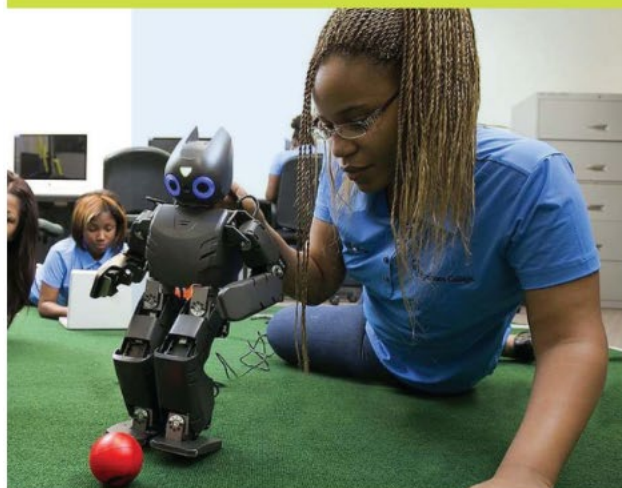
No. 1 HBCU
Spelman College ranked No. 1 for 15 years in a row in 2021



Highest %
of tenured faculty who are Black women



No. 1
baccalaureate institution for Black women who go on to receive PhDs in STEM



Academics



Academics



MAJORS, MINORS, PROGRAMS AND ADDITIONAL OFFERINGS

Arts

Arts
 Art History
 Dance Performance & Choreography
 Documentary Filmmaking
 Music
 Photography
 Theatre & Performance

Humanities

Comparative Women's Studies
 English
 French
 History
 Human Services
 Philosophy
 Religious Studies
 Spanish

Social Sciences and Education

Education Studies
 Economics
 Elementary Education
 International Studies
 Political Science
 Psychology
 Sociology
 Sociology and Anthropology

Natural Science and Mathematics

Biochemistry	Environmental Studies
Biology	General Science <i>(Dual Degree Engineering)</i>
Chemistry	Health Sciences
Computer and Information Sciences	Mathematics
Environmental and Health Sciences	Physics

Minors

African Diaspora Studies	Economics	Mathematics
Anthropology	Education Studies	Naval Science
Art	English	Photography
Art History	Environmental Sciences	Philosophy
Asian Studies	Environmental Studies	Physics
Biochemistry	Film Studies and Visual Culture	Political Science
Chemistry	Food Studies	Psychology
Comparative Women's Studies	French	Refugee and Forced Migration Studies
Computer and Information Sciences	History	Religious Studies
Curatorial Studies	International Studies	Sociology
Dance	Japan Studies	Spanish
Documentary Filmmaking	Management and Organization	Theatre & Performance

Writing

Programs

African Diaspora and World
 Asian Studies
 Curatorial Studies
 Food Studies
 Honors Program
 Health Careers

Additional Offerings

Domestic Exchange
 First-Generation Scholars Program
 Gordon-Zeto Center for Global Education
 ROTC
 Spelman Independent Scholars (SIS)
 Study Abroad and International Exchange



Academics



FACULTY EMPLOYMENT STATUS

	2018-19		2019-20		2020-21		2021-22		2022-23	
Full-Time	177	71%	183	68%	179	73%	183	69%	192	67%
Part-Time	74	29%	87	32%	67	27%	84	31%	96	33%
Total	251		270		246		267		288	



FACULTY BY RANK

	2018-19		2019-20		2020-21		2021-22		2022-23	
	Full-Time	Part-Time	Full-Time	Part-Time	Full-Time	Part-Time	Full-Time	Part-Time	Full-Time	Part-Time
Professor	19	3	20	4	24	2	26	2	29	1
Associate Professor	64	0	68	0	61	0	55	0	58	0
Assistant Professor	42	0	43	0	43	0	48	0	49	0
Instructor	16	28	17	36	16	34	22	41	18	54
Lecturer	36	43	35	42	35	31	32	41	38	41
Total	177	74	183	87	179	67	183	84	192	96
Grand Total	251		270		246		267		288	



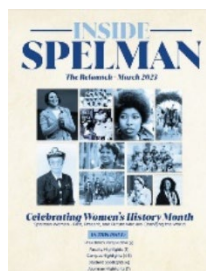
FACULTY BY GENDER

	Full-Time	Part-Time	Full-Time	Part-Time	Full-Time	Part-Time	Full-Time	Part-Time	Full-Time	Part-Time
Women	131	50	141	66	138	49	137	63	144	71
Men	46	24	42	21	41	18	46	21	48	25



FACULTY BY HIGHEST DEGREE

	2018-19		2019-20		2020-21		2021-22		2022-23	
	Full-Time	Part-Time	Full-Time	Part-Time	Full-Time	Part-Time	Full-Time	Part-Time	Full-Time	Part-Time
Doctorate (or Equivalent)	159	48	165	45	163	34	164	43	173	49
Master's	15	20	15	40	14	30	16	33	15	39
Bachelor's	3	6	3	2	2	3	2	8	4	8
Unknown or Other	0	0	0	0	0	0	1	0	0	0
Total	177	74	183	87	179	67	183	84	192	96
Grand Total	251		270		246		267		288	



https://www.flipsnack.com/spelmancollege/insidespelman_august23/full-view.html



Graduation and Retention



Graduation and Retention

483



GRADUATES BY MAJOR TREND

Major	2018			2019			2020			2021			2022		
	BA	BS	Total	BA	BS	Total	BA	BS	Total	BA	BS	Total	BA	BS	Total
Art	5	0	5	10	0	10	4	0	4	3	0	3	2	0	2
Art History	0	0	0	0	0	0	0	0	0	1	0	1	3	0	3
Biochemistry	0	2	2	0	2	2	0	6	6	0	7	7	0	6	6
Biology	0	72	72	0	55	55	0	52	52	0	64	64	0	69	69
Chemistry	0	15	15	0	6	6	0	8	8	0	10	10	0	10	10
Comparative Women's Studies	21	0	21	22	0	22	30	0	30	16	0	16	22	0	22
Computer and Information Sciences	0	11	11	0	12	12	0	16	16	0	17	17	0	19	19
Dance Performance & Choreography	4	0	4	3	0	3	2	0	2	7	0	7	5	0	5
Documentary Filmmaking	0	0	0	0	0	0	0	0	0	5	0	5	8	0	8
Economics	31	0	31	49	0	49	49	0	49	35	0	35	42	0	42
Education Studies	8	0	8	10	0	10	7	0	7	7	0	7	3	0	3
Elementary Education	9	0	9	8	0	8	7	0	7	10	0	10	6	0	6
English	30	0	30	35	0	35	32	0	32	39	0	39	35	0	35
Environmental Sciences	0	6	6	0	4	4	0	4	4	0	2	2	0	4	4
Environmental Studies	2	0	2	2	0	2	1	0	1	3	0	3	0	0	0
French	1	0	1	1	0	1	0	0	0	0	0	0	0	0	0
General Science (Dual Degree Engineering)	0	0	0	0	0	0	0	2	2	0	0	0	0	0	0
Health Sciences	0	2	2	0	31	31	0	40	40	0	42	42	0	44	44
History	9	0	9	9	0	9	3	0	3	7	0	7	7	0	7
Human Services	1	0	1	0	0	0	1	0	1	1	0	1	0	0	0
Independent Major	0	0	0	0	3	3	2	5	7	4	2	6	0	1	1
International Studies	28	0	28	19	0	19	17	0	17	21	0	21	22	0	22
Mathematics	3	15	18	9	10	19	2	12	14	2	12	14	4	6	10
Music	5	0	5	4	0	4	2	0	2	4	0	4	1	0	1
Philosophy	1	0	1	4	0	4	5	0	5	6	0	6	4	0	4
Physics	0	1	1	0	2	2	0	3	3	0	2	2	0	5	5
Photography	0	0	0	0	0	0	0	0	0	1	0	1	1	0	1
Political Science	58	0	58	58	0	58	57	0	57	46	0	46	50	0	50
Psychology	74	3	77	52	8	60	56	8	64	57	13	70	53	17	70
Religious Studies	1	0	1	1	0	1	2	0	2	1	0	1	1	0	1
Sociology	10	0	10	22	0	22	13	0	13	11	0	11	19	0	19
Sociology and Anthropology	4	0	4	4	0	4	4	0	4	11	0	11	6	0	6
Spanish	9	0	9	5	0	5	6	0	6	6	0	6	4	0	4
Theater & Performance (Drama)	5	0	5	5	0	5	11	0	11	10	0	10	4	0	4
Total	319	127	446	332	133	465	313	156	469	314	171	485	302	181	483



Graduation and Retention

STEM GRADUATES BY MAJOR TREND

Major	2018			2019			2020			2021			2022		
	BA	BS	Total	BA	BS	Total	BA	BS	Total	BA	BS	Total	BA	BS	Total
Biochemistry	0	2	2	0	2	2	0	6	6	0	7	7	0	6	6
Biology	0	72	72	0	55	55	0	52	52	0	64	64	0	69	69
Chemistry	0	15	15	0	6	6	0	8	8	0	10	10	0	10	10
Computer and Information Sciences	0	11	11	0	12	12	0	16	16	0	17	17	0	19	19
Economics*	*	*	*	*	*	*	*	*	*	*	*	*	42	0	42
Environmental Sciences	0	6	6	0	4	4	0	4	4	0	2	2	0	4	4
General Science (Dual Degree Engineering)	0	0	0	0	0	0	0	40	2	0	42	42	0	0	0
Health Sciences	0	2	2	0	31	31	0	0	40	0	0	0	0	44	44
Independent Major	0	0	0	0	3	3	*	5	5	0	2	2	0	1	1
Mathematics	3	15	18	9	10	19	2	12	14	2	12	14	4	6	10
Physics	0	1	1	0	2	2	0	3	3	0	2	2	0	5	5
Psychology*	*	*	*	*	*	*	*	*	*	*	*	*	53	17	70
Total	3	124	127	9	125	134	2	146	150	2	158	160	99	181	280

*No data available. New STEM major."



TGBIC-Online Gallery Art board-7

<https://www.spelman.edu/academics/research-programs/g-stem/overview>



Graduation and Retention



FULL-TIME, FIRST-TIME (FTFT) RETENTION RATES

Fall Census	Fall Enrollment		Cohort Retention Rate (RR)					
Year	Total Headcount	FTFT Cohort Headcount	#Retained 2nd YR	2nd-Yr RR	#Retained 3rd YR	3rd-Yr RR	#Retained 4th YR	4th-Yr RR
2012	2,145	520	458	88%	446	86%	426	82%
2013	2,129	557	495	89%	464	83%	440	79%
2014	2,135	550	495	90%	457	83%	447	81%
2015	2,144	564	515	91%	479	85%	456	81%
2016	2,125	531	475	89%	447	84%	420	79%
2017	2,137	545	494	91%	456	84%	436	80%
2018	2,171	571	504	88%	490	86%	439	77%
2019	2,120	516	460	89%	436	84%	413	80%
2020	2,207	569	520	91%	481	85%	*n/a	*n/a
2021	2,417	794	710	89%	*n/a	*n/a	*n/a	*n/a
2022	2,374	577	*n/a	*n/a	*n/a	*n/a	*n/a	*n/a

NOTE: *n/a – data not yet available



FULL-TIME, FIRST-TIME (FTFT) GRADUATION RATES

Fall Census	Fall Enrollment		Cohort Graduation Rate (GR)					
Year	Total Headcount	FTFT Cohort Headcount	#Graduates 4 yrs or less	4-Year GR	#Graduates 5 yrs or less	5-Year GR	#Graduates 6 yrs or less	6-Year GR
2012	2,145	520	355	68%	380	73%	391	75%
2013	2,129	557	374	67%	405	73%	416	75%
2014	2,135	550	357	65%	394	72%	410	75%
2015	2,144	564	372	66%	409	73%	429	76%
2016	2,125	531	354	67%	377	71%	393	74%
2017	2,137	545	368	68%	401	74%	*n/a	*n/a
2018	2,171	571	395	69%	*n/a	*n/a	*n/a	*n/a
2019	2,120	516	*n/a	*n/a	*n/a	*n/a	*n/a	*n/a
2020	2,207	569	*n/a	*n/a	*n/a	*n/a	*n/a	*n/a
2021	2,417	794	*n/a	*n/a	*n/a	*n/a	*n/a	*n/a
2022	2,374	577	*n/a	*n/a	*n/a	*n/a	*n/a	*n/a

NOTE: *n/a – data not yet available



Graduate Employment Data

 FIRMS THAT HIRE OUR GRADUATES



Accenture	KIPP Schools
Amazon	Linked In
Apple	Macy's
AT&T	Mail Chimp
Atlanta Public Schools	Microsoft
Bloomberg	Moody's
Boeing	KIPP Schools
Central Intelligence Agency (CIA)	Nestle
Chick-Fil-A	Nielsen
City Year	Ogilvy & Mather
Cox Media	Oracle
Cummins	Peace Corps
Deloitte	PepsiCo
Delta Airlines	Target
Edward Jones	Teach for America
Environmental Protection Agency	Turner Broadcasting System
Facebook	U.S. Department of State
General Electric	Uncommon Schools
Goldman Sachs	Wells Fargo
Google	Nestle
Home Depot	Nielsen
IBM	Ogilvy & Mather
J.P.Morgan	Oracle
Kaiser Permanente	Peace Corps
WarnerMedia	



Financial Data



Financial Data

IPEDS FALL 2021 FULL-TIME, FIRST-TIME STUDENTS GRANT AND LOAN AID AWARDS

Grant/Scholarship	% of Students Awarded	Average Amount Awarded
Federal Government	44%	\$5,502
Pell Grant	44%	\$5,315
Other Federal	4%	\$2,063
State/Local Government	21%	\$5,181
Institutional Grants	96%	\$7,017

Loans	% of Students Awarded	Average Amount Awarded
Loans to Students	86%	\$7,997
Federal	84%	\$5,763
Other Loans (including private loans)	7%	\$28,647

IPEDS PELL GRANT AND FEDERAL LOAN AWARDS

Pell Grant Aid Year	Full-Time, First-Time		All Undergraduates	
2017 - 18	246	45%	1,019	48%
2018 - 19	262	46%	989	46%
2019 - 20	229	44%	905	43%
2020 - 21	242	43%	916	42%
2021 - 22	353	44%	1,026	42%

Federal Loan Aid Year	Full-Time, First-Time		All Undergraduates	
2017 - 18	458	84%	1,611	75%
2018 - 19	471	82%	1,645	76%
2019 - 20	449	87%	1,644	78%
2020 - 21	431	76%	1,598	72%
2021 - 22	663	84%	1,864	77%



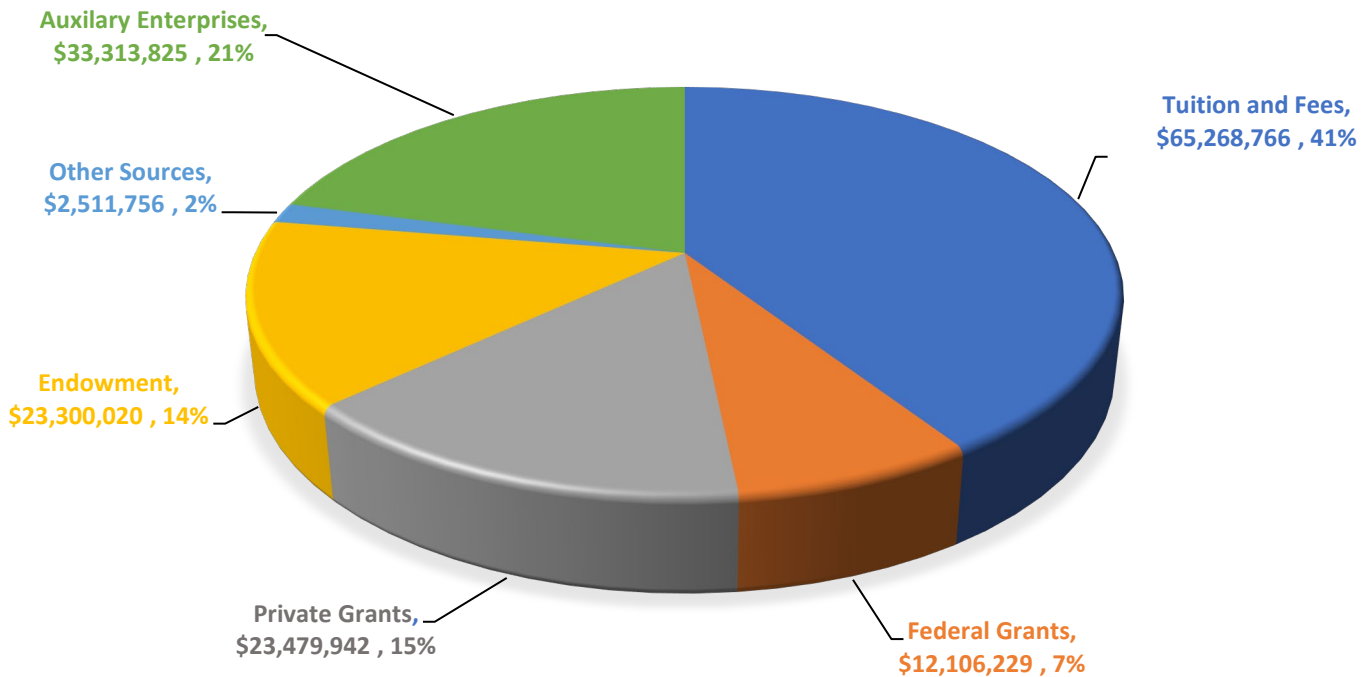
Financial Data



OPERATING BUDGET

Education and General Revenues					
	2018-19	2019-20	2020-21	2021-22	2022-23
Tuition and Fees	\$59,594,212	\$61,815,805	\$61,791,664	\$58,777,850	\$65,268,766
Federal Grants	\$6,519,815	\$7,045,739	\$7,868,247	\$11,770,806	\$12,106,229
Private Gifts	\$14,393,354	\$15,606,327	\$16,324,188	\$18,142,445	\$23,479,942
Endowment	\$18,964,983	\$20,116,887	\$20,313,910	\$20,879,493	\$23,300,020
Other Sources	\$2,976,001	\$2,816,479	\$2,816,479	\$1,706,507	\$2,511,756
Auxiliary Enterprises	\$22,562,180	\$23,420,721	\$23,710,451	\$25,045,041	\$33,313,825
Total Revenues	\$125,010,545	\$130,821,958	\$132,824,939	\$136,322,142	\$159,980,538

2022-23 REVENUES



≡

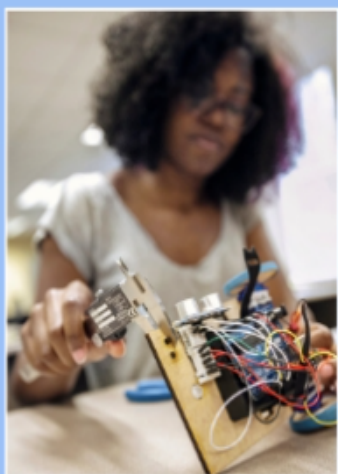


Financial Data



EDUCATION AND GENERAL EXPENDITURES

Expenditures					
Educational and General					
	2018 - 19	2019 - 20	2020 - 21	2021 - 22	2022 - 23
Instruction	\$24,943,366	\$26,315,075	\$26,523,680	\$27,698,484	\$32,969,429
Research	\$4,505,746	\$4,528,519	\$4,158,394	\$3,819,693	\$4,605,253
Faculty Development	\$1,918,674	\$3,087,944	\$3,470,819	\$2,316,189	\$2,723,897
Academic Support	\$12,286,465	\$13,200,287	\$13,284,815	\$14,086,509	\$14,051,533
Subtotal Instruction & Related	\$43,654,251	\$47,131,825	\$47,437,708	\$47,920,876	\$54,350,112
General Expenditures					
Student Services	\$10,103,440	\$10,776,172	\$10,975,925	\$11,620,759	\$12,883,803
Institutional Support	\$21,337,764	\$21,957,389	\$22,918,032	\$26,395,349	\$28,313,722
Operations & Maintenance	\$7,861,021	\$8,069,854	\$8,115,217	\$8,357,565	\$8,924,017
Scholarships	\$20,797,209	\$21,250,540	\$22,453,305	\$21,459,057	\$25,267,824
Mandatory Transfers	\$4,737,088	\$4,694,638	\$3,984,955	\$3,988,410	\$1,256,494
Subtotal General	\$64,836,522	\$66,748,593	\$68,447,434	\$72,181,353	\$76,645,860
Grand Total	\$108,490,773	\$113,880,418	\$115,885,142	\$119,742,016	\$130,995,972



Spelman College®
**THANKS
 THE
 DELOITTE FOUNDATION!**

Spelman received a \$200,000 grant from the Deloitte Foundation to provide scholarships for students majoring in economics, computer science and mathematics. [READ MORE](#) (CTRL)



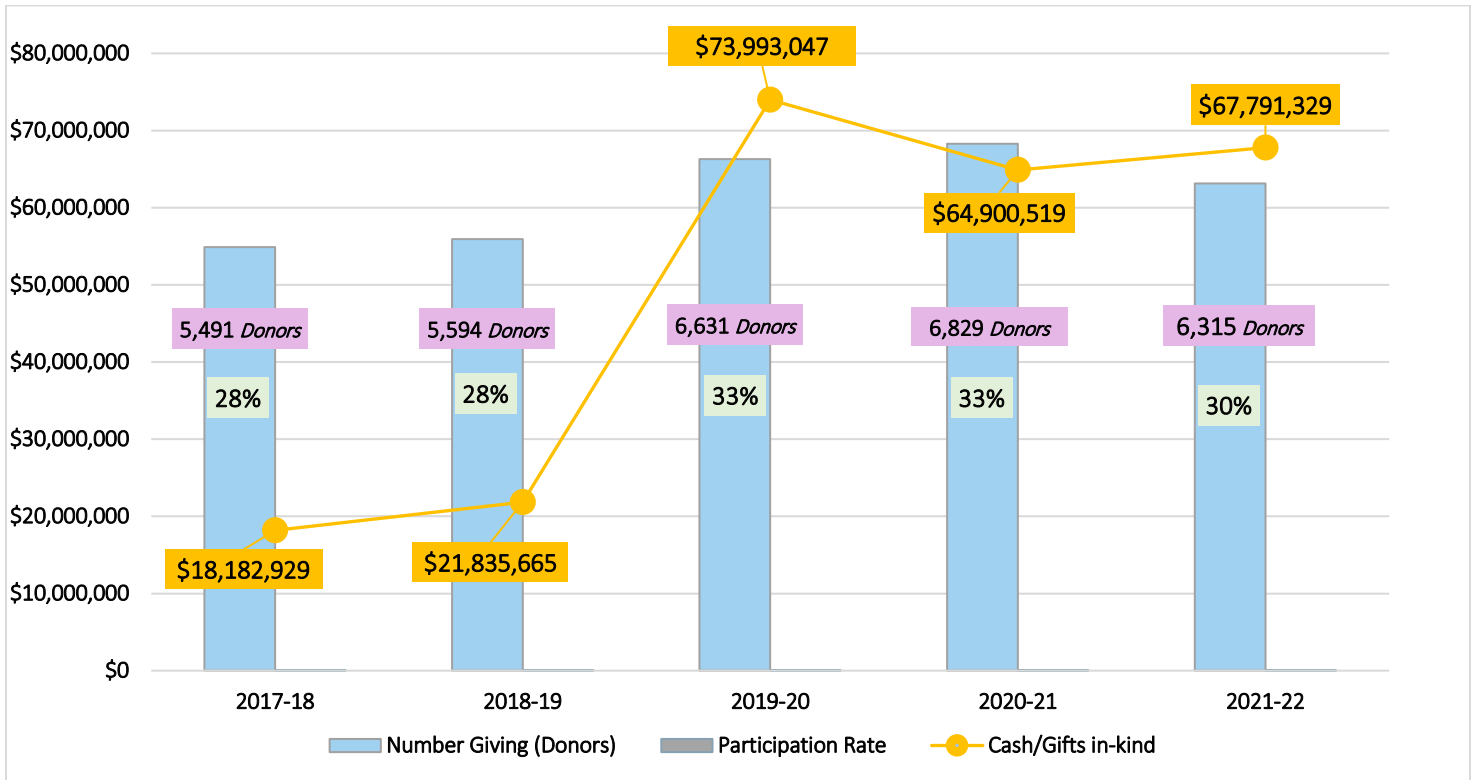
Alumnae Participation & Student Life



Alumnae Participation & Student Life

ALUMNAE GIVING

Year	Number of Alumnae	Number Solicited	Number Giving (Donors)	Participation Rate	Cash/Gifts in-kind
2017 - 18	19,476	19,426	5,491	28%	\$18,182,929
2018 - 19	20,386	19,718	5,594	28%	\$21,835,665
2019 - 20	20,730	20,136	6,631	33%	\$73,993,047
2020 - 21	21,155	20,453	6,829	33%	\$64,900,519
2021 - 22	21,785	20,901	6,315	30%	\$67,791,329



Alumnae Participation & Student Life

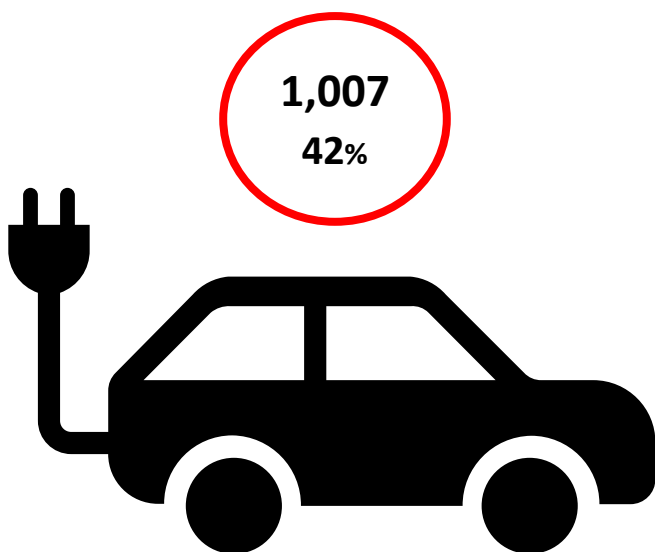
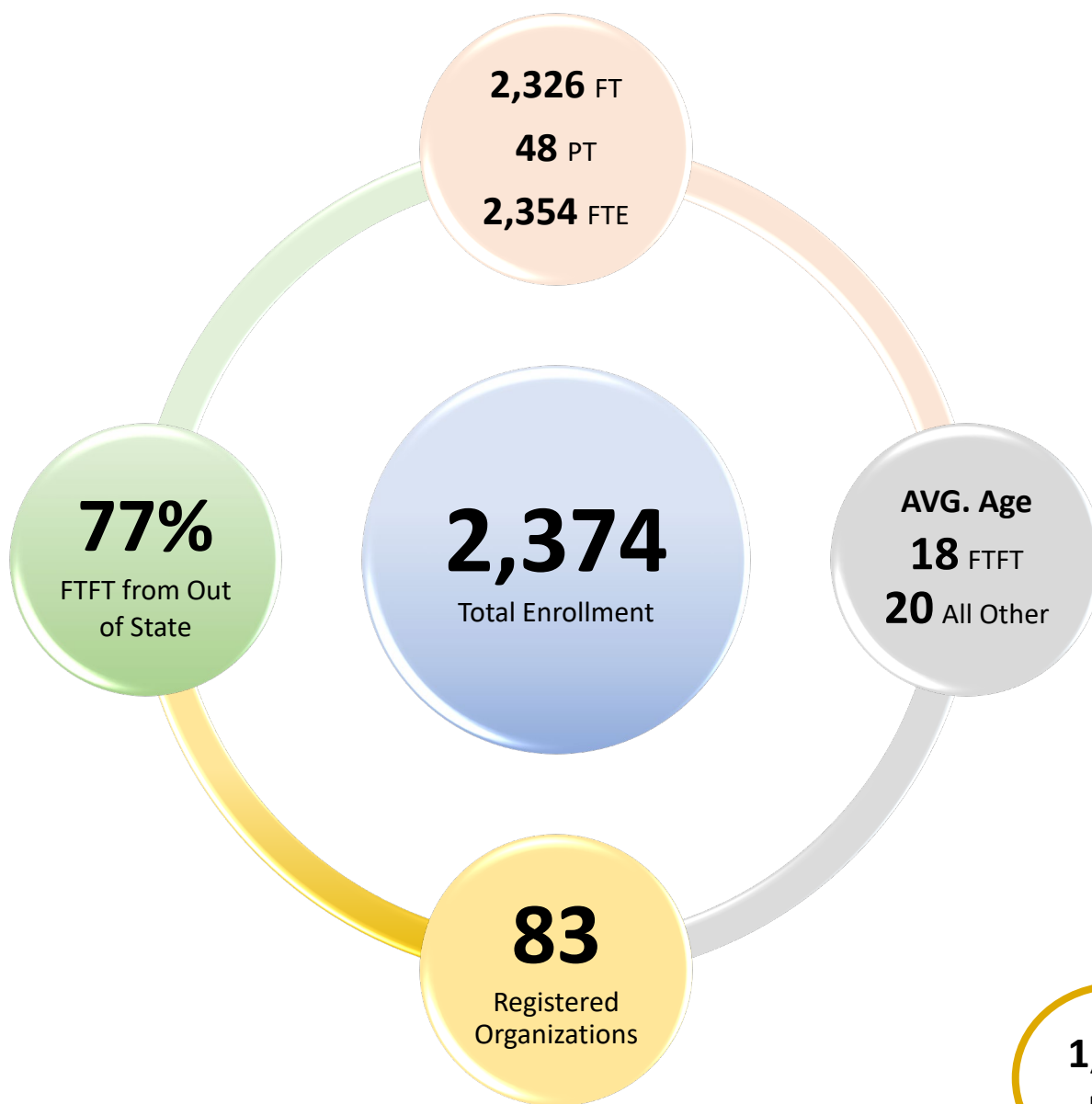
2021–22 ALUMNAE BY STATE OR TERRITORY

State	Count
Top Ten	
Georgia	7,238
Maryland	1,371
California	1,267
New York	1,063
Texas	1,021
Florida	714
North Carolina	689
Illinois	645
Virginia	596
New Jersey	553
All Other States	
District of Columbia	487
Pennsylvania	443
Tennessee	430
Michigan	407
Ohio	385
Alabama	336
South Carolina	328
Louisiana	208
Massachusetts	202
Missouri	177
Indiana	139
Connecticut	128
Mississippi	122
Washington	102
Colorado	93
Arkansas	73
Delaware	68
Kentucky	65
Arizona	64
Minnesota	56
Wisconsin	46
Nevada	41
Kansas	32
Oklahoma	31

State (cont.)	Count (cont.)
Oregon	24
New Mexico	15
Virgin Islands	14
Iowa	13
Rhode Island	10
Nebraska	9
West Virginia	8
New Hampshire	7
Maine	6
Vermont	5
Utah	4
Alaska	2
Hawaii	1
Idaho	1
North Dakota	1
Puerto Rico	1
Grand Total	19,741



Alumnae Participation & Student Life



Live off-campus or commute



1,367
58%

Live in college-owned, -operated or affiliated





Activities Offered

- Academic Groups
- Campus Ministries
- Choral Groups
- Concert Band
- Dance
- Debating Club
- Drama/Theatre
- Glee Club
- Jazz
- Literary Magazine
- Music Ensembles
- Music Theatre
- Political Discussion Groups
- Social Services Groups
- Speakers Forum
- Theater Program
- Yearbook
- 78 Registered Organizations



Popular Campus Events

- Alumnae-Student Excursions
- Annual Spring Leadership Retreat
- Commencement/Reunion
- Election Night
- Fall Leadership Retreat (L.I.T.)
- Founders Day
- Free Headshot Fairs
- Greek Forum
- Leadership Night
- Market Friday
- Miss Spelman Pageant
- MLK Community Service
- New Student Induction Ceremony
- Research Day
- Sisterhood is Global
- Spelman on the Hill
- Spelman/Morehouse Homecoming



Other Campus Events

- Annual Student Drama/Dance & Art Production
- Denim Day at Spelman
- Family Weekend
- Operation Olive Branch
- Spelman/Morehouse Christmas Carol
- When & Where I Enter

<https://spelmancollege.campuslabs.com/engage/>



Facilities and Residential Life

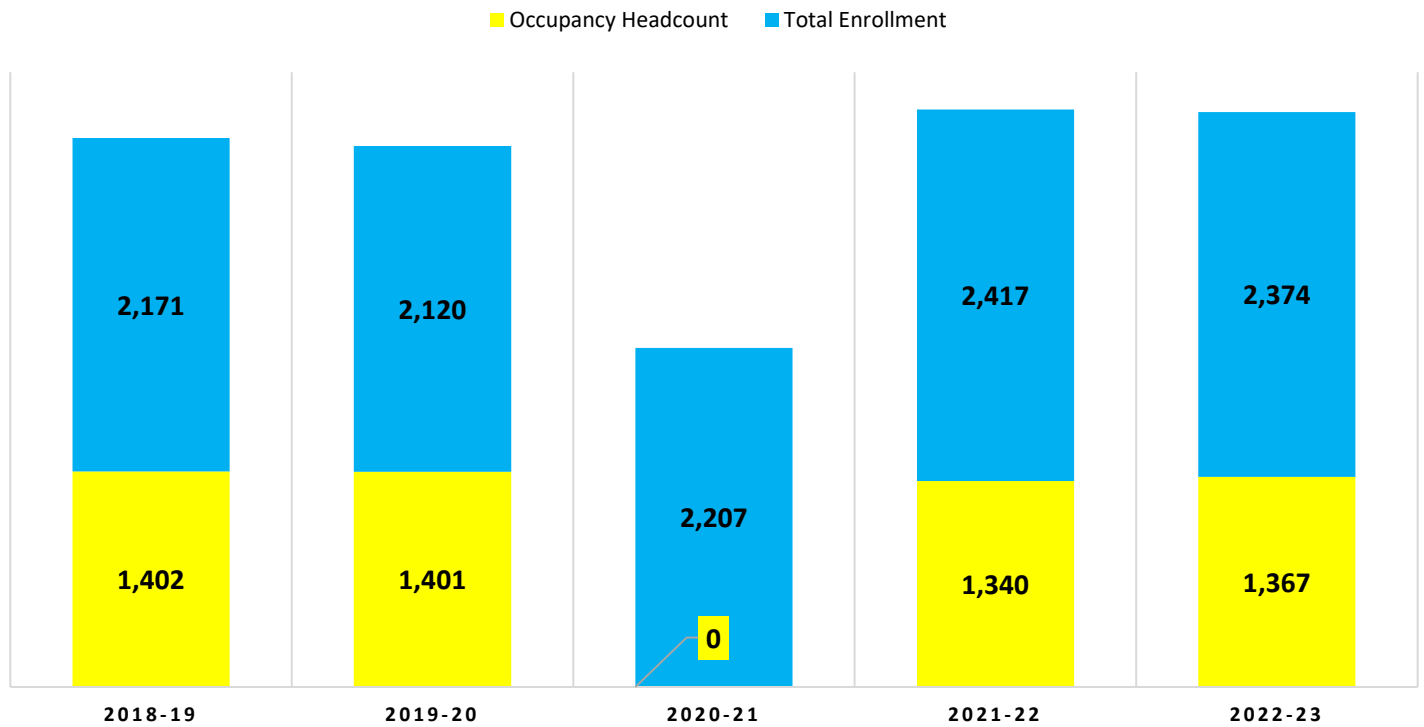


Facilities & Residential Life



STUDENT OCCUPANCY

Academic Year	Occupancy Headcount	Total Enrollment	% Of Residential Students
2018 - 19	1,402	2,171	65%
2019 - 20	1,401	2,120	66%
2020 - 21	0	2,207	0%
2021 - 22	1,340	2,417	55%
2022 - 23	1,367	2,374	58%



Note: During 2020-21 students did not stay in campus housing due to Covid 19.



Facilities & Residential Life



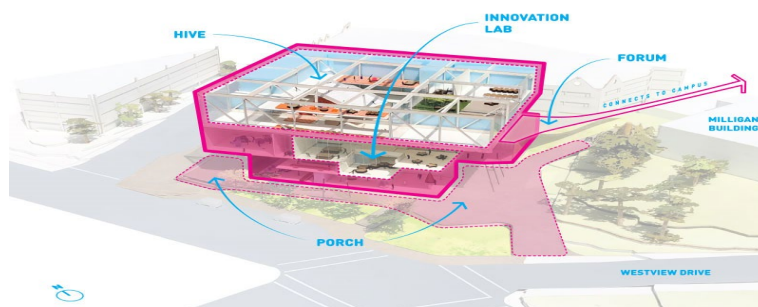
CAMPUS



- | | |
|---|---|
| 1. West Campus Parking Deck/ Public Safety | 14. Packard Hall |
| 2. Sally Sage McAlpin Hall | 15. Rockefeller Hall |
| 3. Dorothy Shepard Manley Hall | 16. Reynolds Cottage |
| 4. Howard-Harreld Hall | 17. Sisters Chapel |
| 5. Donald and Isabel Stewart Living & Learning Center I | 18. Wellness Center at Read Hall |
| 6. Johnnetta Betsch Cole Living & Learning Center II | 19a. Albro-Falconer-Manley Science Center |
| 7. Bessie Strong Hall | 19b. Tapley Hall |
| 8. MacVicar Health Services | 19c. Academic Computing Center |
| 9. Albert E. Manley College Center | 20. Laura Spelman Hall |
| 9a. Bookstore/Post Office | 21. Morehouse-James Hall |
| 10. Facilities Management & Services | 22. Abby Aldrich Rockefeller Hall |
| 11. Camille Olivia Hanks Cosby, Ed.D. Academic Center | 23. Giles Hall |
| 12. John D. Rockefeller Fine Arts Building | 24. Milligan Building |
| 13. Not Used | 25. Beverly Daniel Tatum Suites |

SCM – Spelman College Museum of Fine Art

RWWL - Robert W. Woodruff Library



Facilities & Residential Life



SOCIAL MEDIA @ SPELMAN COLLEGE

LinkedIn: https://www.linkedin.com/school/spelman-college_2/

Twitter: www.twitter.com/spelmancollege

YouTube: www.youtube.com/spelmancollege

Instagram: www.instagram.com/spelman_college

Facebook: www.facebook.com/SpelmanCollege

Flickr: <https://www.flickr.com/photos/spelmanglee/albums>



Institutional Research



INSTITUTIONAL RESEARCH AND CONTACTS

The Fact Book is compiled, edited and published by Institutional Research (IR), a unit of Academic Affairs.

Institutional Research (IR) provides official institutional data, analyses and research to support and improve decision-making. In support of this mission, IR:

- *Provides data for the institution's accountability and compliance with accrediting agencies and government entities;*
- *Collects, analyzes, and provides campus administrators with appropriate data and information;*
- *Coordinates planning, budgeting, evaluation, and course evaluation processes; and*
- *Responds to data requests and surveys from internal and external constituencies.*
- *Provide data on admissions, enrollment, degrees, faculty and other institutional characteristics.*

Institutional Research Staff



James Sanders

Director of Institutional Research

404-270-5674

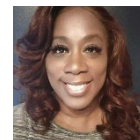
jsande14@spelman.edu



Kisha Allen

Research Analyst

kallen@spelman.edu



Tomiko Park, Ed.S

Research Data Manager

tomikopark@spelman.edu

<https://www.spelman.edu/academics/office-of-the-provost/institutional-research>







Spelman College®

A Choice to Change the World