



SPELMAN COLLEGE

# Mini Fact Book

Fall 2019



Spelman College®

*A Choice to Change the World*

**ABOUT SPELMAN** Founded in 1881 as the Atlanta Baptist Female Seminary, we became Spelman College in 1924. Spelman is now a global leader in the education of women of African descent. Spelman is accredited by the Southern Association of Colleges and Schools Commission on Colleges (1886 Southern Lane, Decatur, GA 30033, 404-679-4500) to award baccalaureate degrees. We are proud members of the Atlanta University Center Consortium. Spelman empowers women to engage the many cultures of the world and inspires a commitment to positive social change through service. We are dedicated to academic excellence Spelman is led by Dr. Mary Schmidt Campbell, our 10th president.

**MISSION** Spelman College, a historically Black college and a global leader in the education of women of African descent, is dedicated to academic excellence in the liberal arts and sciences and the intellectual, creative, ethical, and leadership development of its students. Spelman empowers the whole person to engage the many cultures of the world and inspires a commitment to positive social change.

# STUDENT BODY

Enrollment: 2,080 (FT) + 40 (PT) = **2,120**

FT: Full-Time  
PT: Part-Time

First-Time,  
First-Year  
**516**  
24.34%

FT **516**  
PT **0**

Other  
First-Year  
**62**  
2.92%

FT **54**  
PT **8**

Sophomore  
**553**  
26.08%

FT **545**  
PT **8**

Junior  
**514**  
24.25%

FT **506**  
PT **8**

Senior  
**475**  
22.41%

FT **459**  
PT **16**

## ETHNICITY

- Black or African American 2,065 97.41%
  - American Indian or Alaska Native 30 1.42%
  - Non-Resident Alien 16 0.75%
  - Two or More Races 5 0.24%
  - White 3 0.14%
  - Asian 1 0.05%
- Grand Total 2,120 100%

ENROLLMENT

Full-Time 2,080

Part-Time 40

IPEDS Full-T

STUDENT  
TO FACULTY  
RATIO

10:1

## FACULTY

	Women	Men	Headcount
Full-Time	141	42	183
Part-Time	66	21	87
<b>Total</b>	207	63	270

Time Equivalent (FTE) 2,096

## ADMISSIONS DATA

	Headcount
Completed Applications	9,106
Offered Admission	3,956
Yield Admitted	43%
Registered	516
Yield Registered (of those Admitted)	13%
Fall Cohort (First-Time, Full-Time)	516

## TRANSFER STUDENTS DATA

	Headcount
Completed Applications	220
Offered Admission	85
Yield Admitted	39%
Registered	43
Yield Registered (of those Admitted)	49%

## ANNUAL COST OF ATTENDANCE

Tuition  
\$25,942

Fees  
\$4,030

Room & Board  
\$14,338

Total  
\$44,310

## OTHER EXPENSES

Tuition Deposit \$300  
New Student Fee\* \$250  
Per credit hour charges \$1,070  
\*First semester enrolled

## GRADUATES (2018-19)

B.A. Degrees Awarded 332 71.40%  
B.S. Degrees Awarded 133 28.60%  
TOTAL: 465 100%

Note: Graduates are from July 1, 2018 to June 30, 2019

**ALUMNAE** Headcount 20,386 Solicited 19,718

## TEST SCORES

### AVERAGE SAT R SCORES

Evidence-Based Reading & Writing 593  
Math 567  
**1160**  
TOTAL

### AVERAGE ACT SCORES

English 25  
Math 22  
**24**  
COMPOSITE

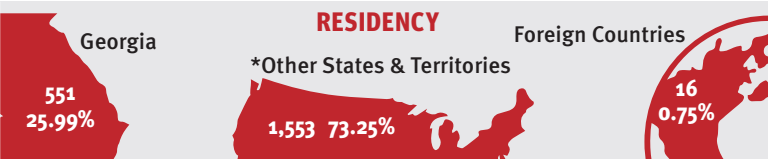


Ethnicity	B.A.	B.S.	Total
Black or African American	321	131	452
American Indian or Alaska Native	5	0	5
Non-Resident Alien	3	2	5
Hispanic / Latino	2	0	2
Two or More Races	1	0	1
<b>Grand Total</b>	<b>332</b>	<b>133</b>	<b>465</b>

**Giving** 5,594    **Participation Rate** 28.4%    **Cash/Gifts In-Kind** \$21,835,665

## RETENTION & GRADUATION RATES

Year	Retention Rate	Graduation Rate		
	2nd-Year	4-Year	5-Year	6-Year
2018–2019	91%	68%	73%	75%
2019–2020	88%	67%	73%	75%



**States Represented** 45  
**Countries Represented** 7

**Top 5** GA, CA, MD, NY, TX  
**Top 3** Bahamas, Bermuda, Kenya

\* Includes DC and Military Americas, Europe, Pacific and Virgin Islands

# FALL 2019 ENROLLMENT BY MAJORS

## Division of the Arts

Art	15	0.71%
Art-History	3	0.14%
Dance Performance & Choreography	13	0.61%
Documentary Filmmaking	25	1.18%
Music	18	0.85%
Photography	2	0.09%
Theater and Performance	40	1.89%
<b>TOTAL</b>	<b>116</b>	<b>5.47%</b>

## Division of Natural Sciences & Mathematics

Biochemistry	35	1.65%
Biology	292	13.77%
Chemistry	41	1.93%
Computer Science	83	3.92%
Environmental Science	11	0.52%
General Science	32	1.51%
Health Science	167	7.88%



Mathematics	53	2.50%
Physics	13	0.61%
<b>TOTAL</b>	<b>727</b>	<b>34.29%</b>

## Division of Humanities

Comparative Women's Studies	63	2.97%
English	133	6.27%
French	2	0.09%
History	20	0.94%
Philosophy	15	0.71%
Religious Studies	6	0.28%
Spanish	21	0.99%
<b>TOTAL</b>	<b>260</b>	<b>12.26%</b>

## Division of Social Sciences & Education

Early Childhood Education	33	1.56%
Economics	152	7.17%
Education Studies	24	1.13%
Environmental Studies	5	0.24%

## FALL 2019 ENROLLMENT BY MAJORS (cont'd)

Human Services	4	0.19%
Independent Major-BA	2	0.09%
Independent Major-BS	1	0.05%
International Studies	102	4.81%
Political Science	202	9.53%
Psychology	281	13.25%
Sociology	64	3.02%
Sociology & Anthropology	32	1.51%
<b>TOTAL</b>	<b>902</b>	<b>42.55%</b>

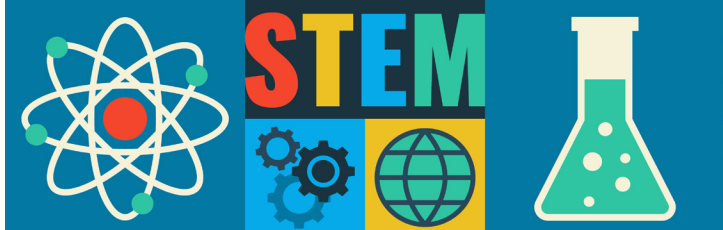
### Undeclared

Undeclared	115	5.42%
<b>TOTAL</b>	<b>115</b>	<b>5.42%</b>

### GRAND TOTAL

**2,120**

**100%**



## SCIENCE, TECHNOLOGY, ENGINEERING & MATHEMATICS

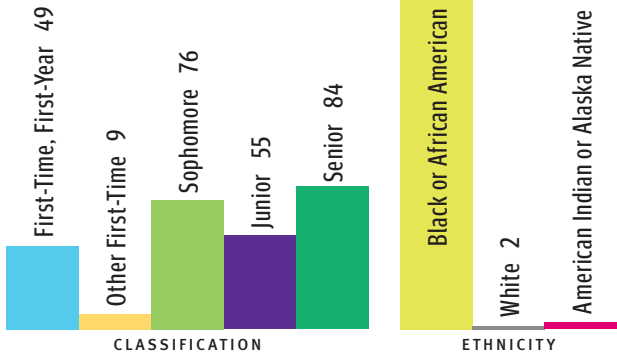
Fall 2019  
Student Body  
Headcount

2018-19 STEM  
Graduates  
Headcount

Biochemistry	35	2
Biology	292	55
Chemistry	41	6
Computer & Information Sciences	83	12
Environmental Sciences	11	4
General Sciences	32	
Health Sciences	167	31
Independent Major – BS	1	3
Mathematics	53	19
Physics	13	2
<b>TOTALS</b>	<b>728 / 34.34%</b>	<b>134 / 28.82%</b>

TOTAL Degree Seeking 273 13%

## FALL 2019 FIRST GENERATION



## CONTACT INFORMATION

### Institutional Research

350 Spelman Lane, Box 875, Atlanta, GA 30314

Office: 404-270-5675 Fax: 404-270-5676

Email: [iresearch@spelman.edu](mailto:iresearch@spelman.edu)

[www.spelman.edu/iresearch](http://www.spelman.edu/iresearch)